

ORDERING INFORMATION

LASP24- [ ]

Stroke  
025, 050 & 075mm

Actuator  
N Pneumatic - NPT Ports  
G Pneumatic - G Ports

Ram Dowels  
D06,D08,D10 (Dowels are Nominal)

Ram Holes  
C09, C11 Clearance holes  
M08, M10 Tapped Holes

Switch  
E Effector Weld Immune  
B Balluff  
T Turck  
S Sick (Standard) Weld Immune

Switch Position  
E S01 Ext Pos  
R S01 Ret Pos

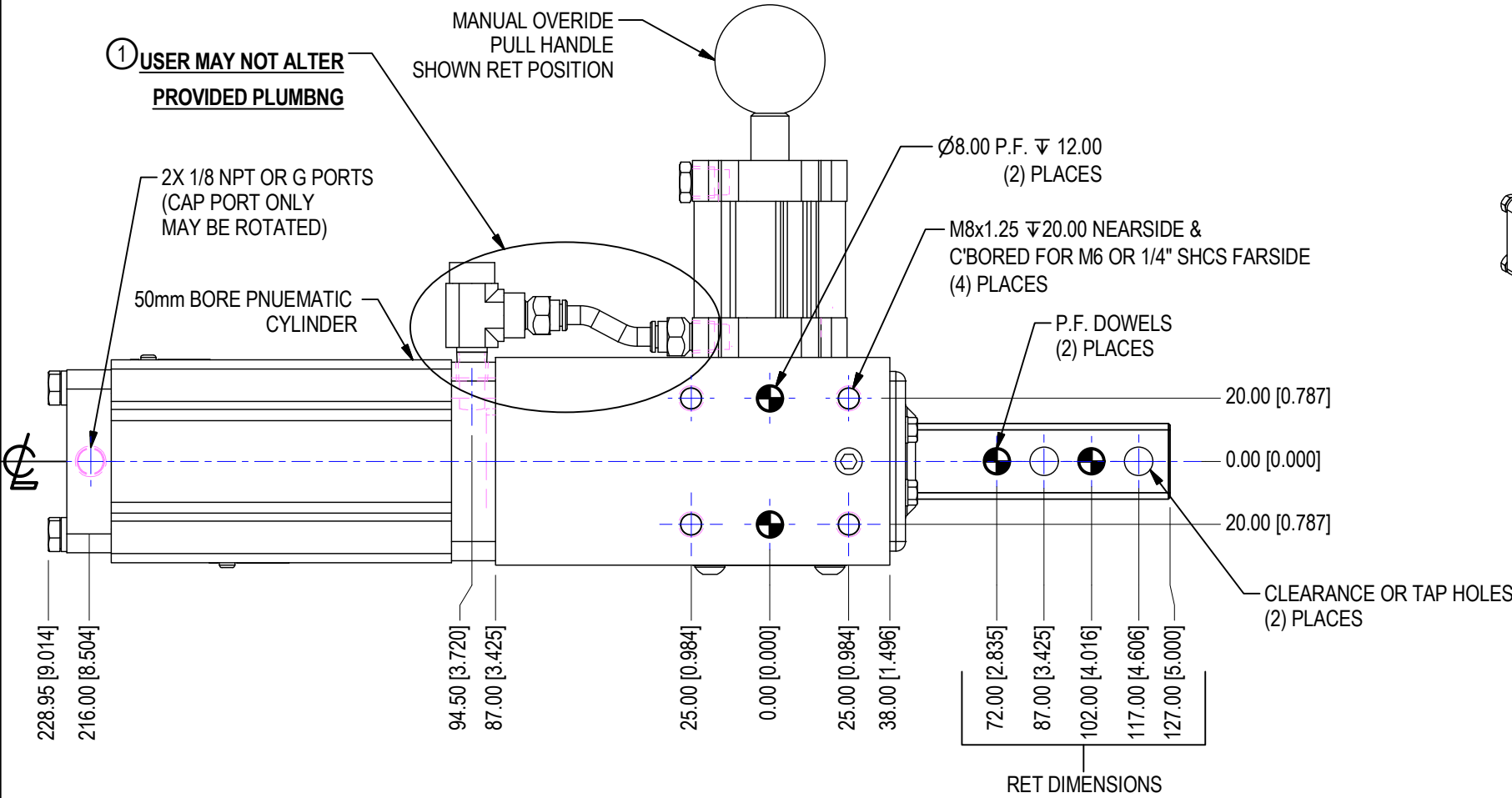
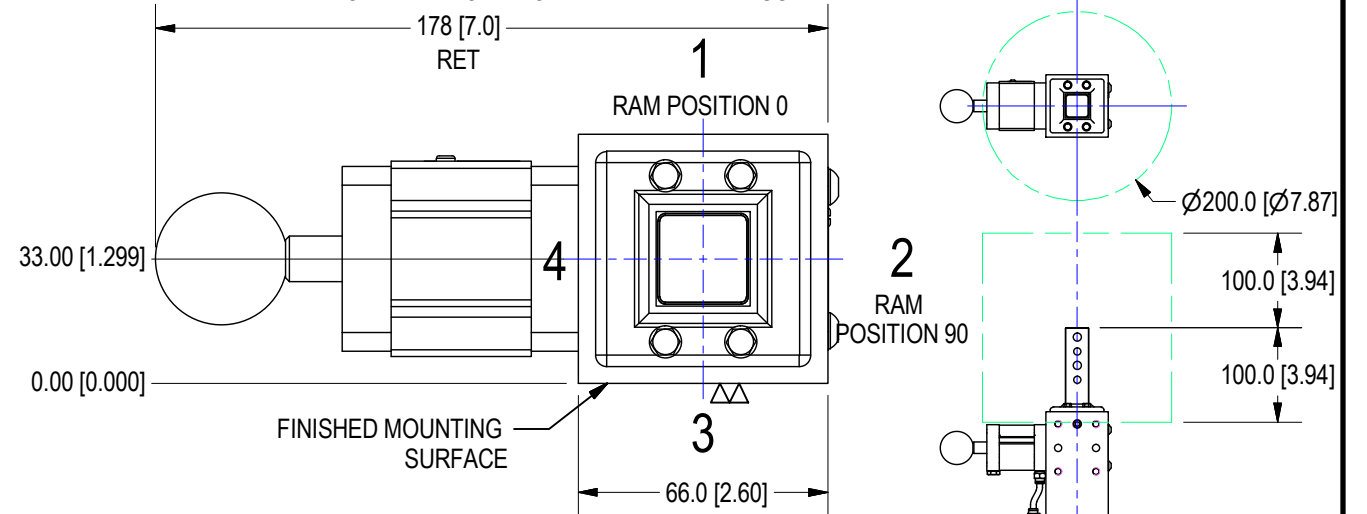
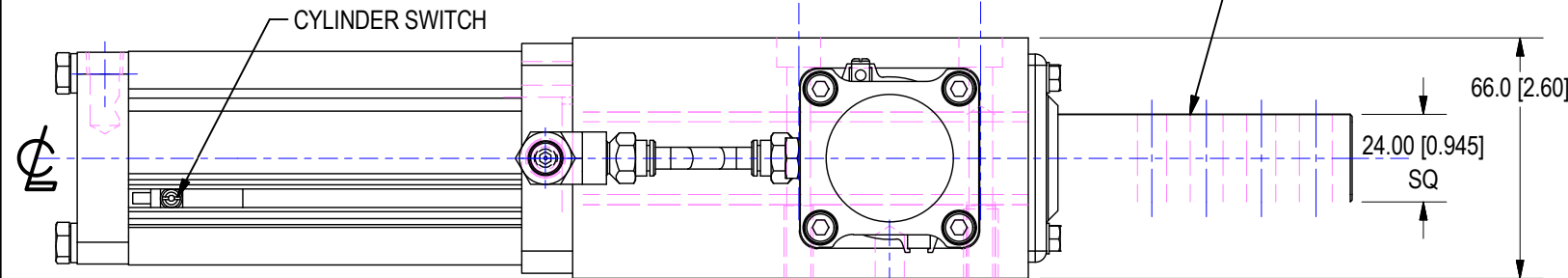
Ram Position  
0 0 Degree (Shown)  
9 90 Degree

Port Position (Rear Cap Only)  
1 Port Position (Shown)  
2 Port Position  
3 Port Position  
4 Port Position

Lock Position  
2 Lock Position  
4 Lock Position (Shown)

RAM HOLE ORDERING CHART			
RAM STYLE	Dowels	HOLES	STANDARD
D06, C09	6.00mm THRU	9.0 THRU	** FCA
D06, M08	6.00mm THRU	M8 TAP THRU	
D08, C09	8.00mm THRU	9.0 THRU	** GM
D08, M08	8.00mm THRU	M8 TAP THRU	
D08, C11	8.00mm THRU	11.0 THRU	** FORD
D08, M10	8.00mm THRU	M10 TAP THRU	
D10, C11	10.00mm THRU	11.0 THRU	
D10, M10	10.00mm THRU	M10 TAP THRU	

REQUIRED RETRACT CYLCE TIME = MINIMUM 2 SECONDS

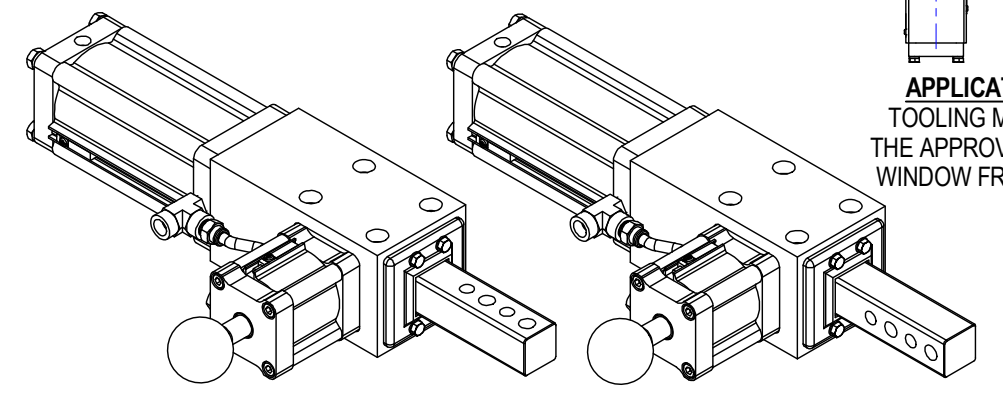


SYM	CHANGES	DATE	BY
-----	---------	------	----

OPERATING PRESSURE - MIN 60psi = 182lbf [82.5kgf] EXT FORCE - 169lbf [76.6kgf] RETRACT FORCE  
 MAX 120psi = 362lbf [164.2kgf] EXT FORCE - 338.5lbf [153.5kgf] RETRACT FORCE  
 LOAD RATING - MAX TOOLING WT=22.5lbs [10kg], MAX GEO CONTACT OFFSET IS 100mm.  
 MAX SIDE LOAD IS 55lbs [25kg]

SWITCHING NOTE:  
 STANDARD CONFIGURATION HAS (3) SWITCHES.  
 (1) DOUBLE CYLINDER SWITCH SENSES EXTENDED AND RETRACT OF SHOT PIN.  
 (1) CYLINDER SWITCH SENSES THE EXTENDED POSITION OF THE LOCKING CYLINDER.  
 ORDER "E" SWITCH OPTION FOR WELD FIELD IMMUNE.

PLUMBING NOTE:  
 THE E&E LOCKING SHOT PIN OPERATES OFF A SINGLE VALVE.  
 THIS FACTORY INSTALLED PLUMBING PROVIDES A DELAY THAT ASSURES THE LOCKING CYLINDER  
 RETRACTS BEFORE THE SHOT PIN CYLINDER. IT IS TAMPER PROOF MARKED AT THE FACTORY  
 AND MAY NOT BE REMOVED OR ALTERED BY THE USER IN ANY WAY.



APPLICATION WINDOW  
 TOOLING MUST BE WITHIN  
 THE APPROVED APPLICATION  
 WINDOW FROM END OF RAM

 7200 MILLER DR. WARREN, MI 48092 EE-CP.COM	NOTICE: THIS DRAWING IS PROPERTY OF E&E CUSTOM PRODUCTS INCLUDING THE PRINCIPLES OF THE DESIGN INVOLVED, AND IS SUBMITTED WITH AGREEMENT THAT IT IS NOT TO BE REPRODUCED, COPIED, OR LOANED, IN PART OR WHOLE, ACCEPTANCE OF THIS DRAWING WILL BE CONSTRUED AS AN AGREEMENT TO THE ABOVE		
	TITLE 24 SERIES LOCKING SHOT PIN		
	PART NO.		
	DRAWN BY:	CHK'D BY:	APPR'D BY:
DATE:	DATE:	DATE:	
SCALE: 1/2	DWG. NO. LASP24-Template		
SHT 1 OF 1			

WEIGHT = 11.5lbs