

LOCKOUT ASSEMBLY ORDERING INFORMATION



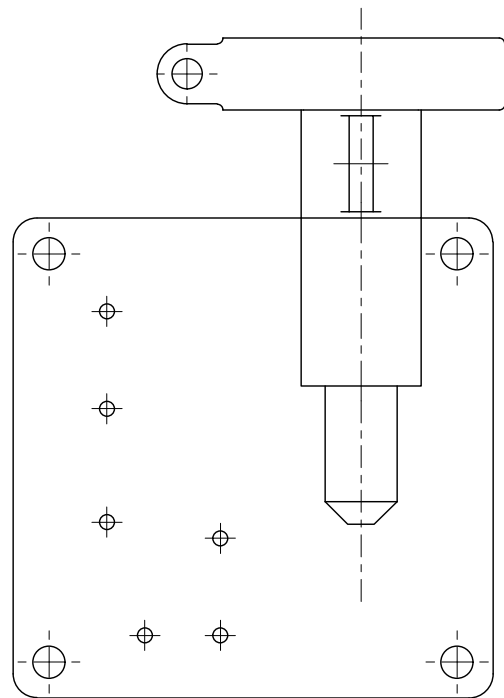
Pin Dia
 12 12mm Dia Pin
 19 19mm Dia pin
 25 25mm Dia Pin

Saddle Color
 Y Yellow

Pin Length mm
 100, 150, 200

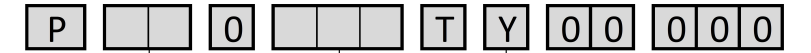
Handle Color
 Y Yellow

Switch
 000 No switch
 200 Pepperl & Fusch Cube Switch (GM)
 201 Turck cube switch (FCA, Ford)
 (See sht 2 for Keyed switch options)



LOCKOUT ASSEMBLY

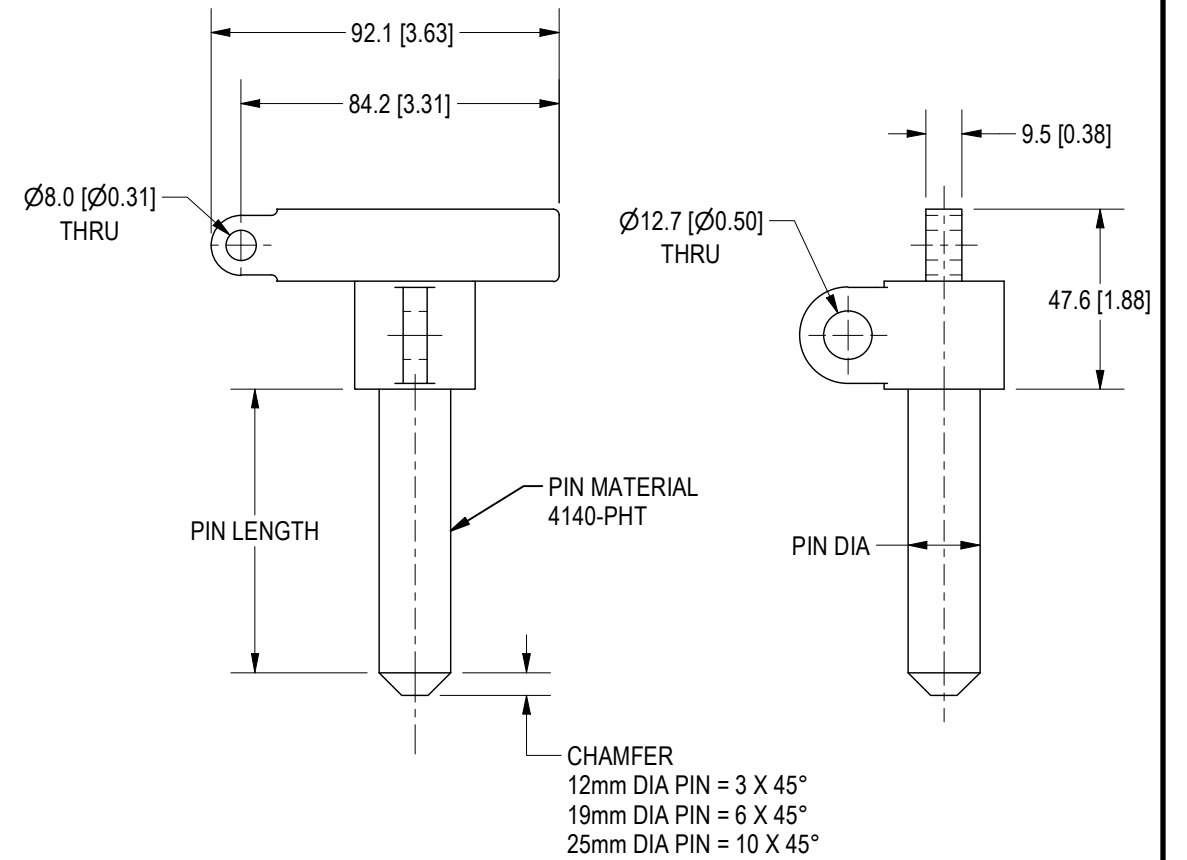
LOCKOUT PIN ONLY ORDERING INFORMATION



Pin Dia
 12 12mm Dia Pin
 19 19mm Dia pin
 25 25mm Dia Pin

Pin Length mm
 100, 150, 200

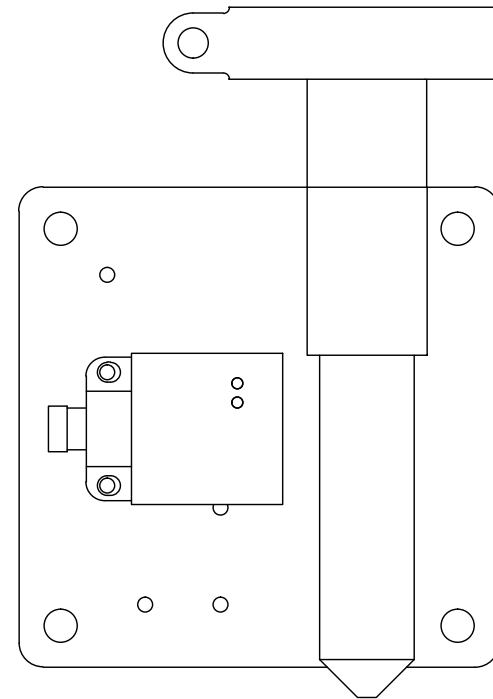
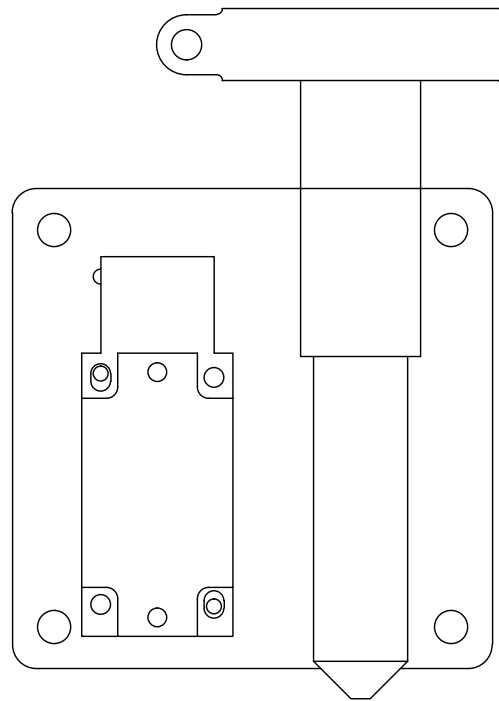
Handle Color
 Y Yellow



LOCKOUT PIN

<p>7200 MILLER DR. WARREN, MI 48092 EE-CP.COM</p>	NOTICE: THIS DRAWING IS PROPERTY OF E&E CUSTOM PRODUCTS INCLUDING THE PRINCIPLES OF THE DESIGN INVOLVED, AND IS SUBMITTED WITH AGREEMENT THAT IT IS NOT TO BE REPRODUCED, COPIED, OR LOANED, IN PART OR WHOLE, ACCEPTANCE OF THIS DRAWING WILL BE CONSTRUED AS AN AGREEMENT TO THE ABOVE		
	TITLE E&E LOCKOUT COMPONENTS		
	PART NO.		
	DRAWN BY: EC	CHK'D BY: EC	APPR'D BY: EC
DATE: 3/27/2023	DATE: 3/27/2023	DATE: 3/27/2023	
SCALE: 1/2	DWG. NO. E&E Lockout Template GESTAMP		
SHT 1 OF 2			

SYM	CHANGES	DATE	BY
-----	---------	------	----



KEYED SWITCHES			
CODE	MANUFACTURE	PART NUMBER	CONTACTS
100	HONEYWELL	GKEA06L	2NC
101	ALLEN BRADLEY	440K-M2NANYC	2NC
102	HONEYWELL	GKBA14LX	2NC+2NO
103	EUCHER	NZ1V5285C	1NC+1NO
104	EUCHER	NZ1V5385C	2NC
105	HONEYWELL	GKBA2P6-F12	2NC+1NO
106	ALLEN BRADLEY	440K-M22AEYT	2NC+1NO
107	BANNER	SI-LM40MKHFXLY	2NC+1NO
108	EUCHER	NZ1VZ-3131EC1972	2NC+1NO
109	TELEMECANIQUE	XCSAREQ3653	2NC+1NO
110	ALLEN BRADLEY	440K-MT55038	

SENSORED SWITCHES		
CODE	MANUFACTURE	PART NUMBER
200	PEPPERL & FUCHS	NBB20-L3M-A2-C3-V1
201	TURCK	1627297

OPTIONAL SWITCHES

<p>7200 MILLER DR. WARREN, MI 48092 EE-CP.COM</p>	<small>NOTICE: THIS DRAWING IS PROPERTY OF E&E CUSTOM PRODUCTS INCLUDING THE PRINCIPLES OF THE DESIGN INVOLVED, AND IS SUBMITTED WITH AGREEMENT THAT IT IS NOT TO BE REPRODUCED, COPIED, OR LOANED, IN PART OR WHOLE, ACCEPTANCE OF THIS DRAWING WILL BE CONSTRUED AS AN AGREEMENT TO THE ABOVE</small>		
	TITLE: E&E LOCKOUT COMPONENTS		
	PART NO.:		
	DRAWN BY: EC DATE: 3/27/2023	CHK'D BY: EC DATE: 3/27/2023	APPR'D BY: EC DATE: 3/27/2023
SCALE: 1/2 SHT 2 OF 2		DWG. NO. E&E Lockout Template GESTAMP	