

ORDERING INFORMATION

GSP34- [] [] [] [] N D O 8 [] [] [] [] [] [] O [] [] E O

Stroke
025, 050, 075, 100, 125, 150, 175, 200mm

Actuator
N Pneumatic - NPT Ports

Ram Dowels
D08 (Dowels are Nominal)

Ram Holes
C11 Clearance holes
M10 Tapped Holes

Switch
E Efector Weld Immune
S Sick (Cylinder Switch Only) (Standard) Weld immune
P Pepperl & Fuchs (World Switch Only)

Shield
S Safety Orange (Standard)

RAP
0 None

Switch Position
E S01 Ext Pos

Switch Type
C Cylinder Switch
W World Switch

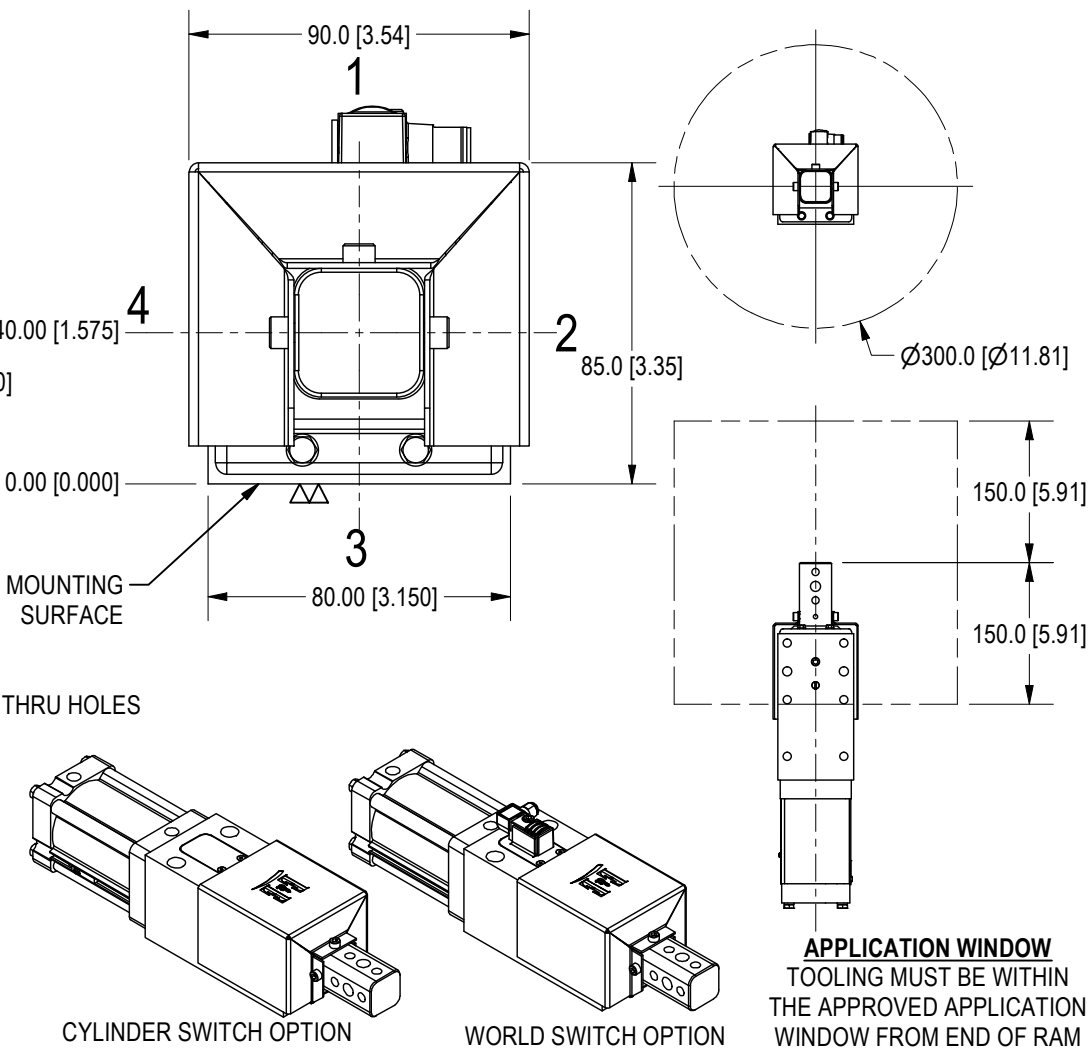
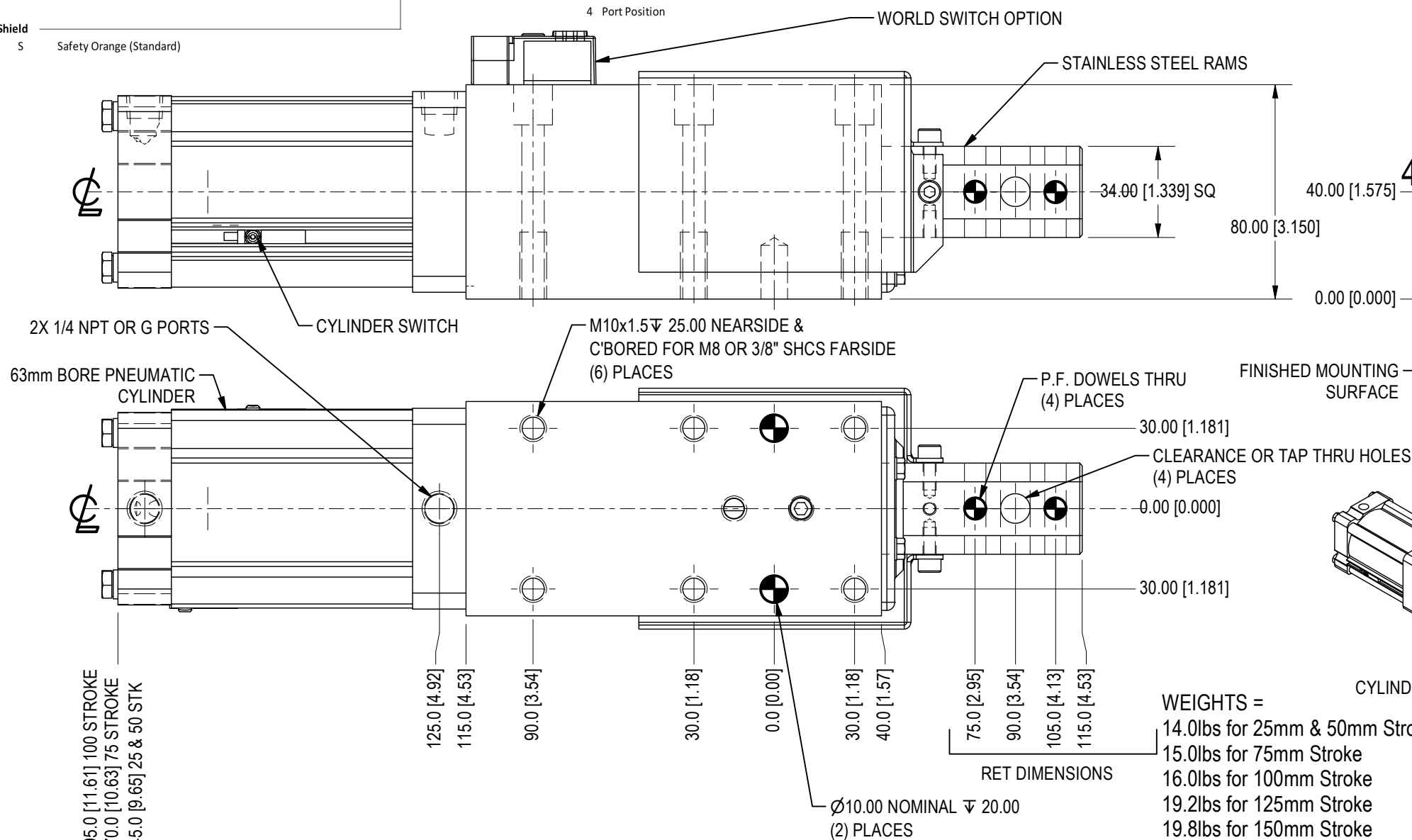
Detent (Non Rap Only)
0 None

Port Position
1 Port Position (Shown)
2 Port Position
3 Port Position
4 Port Position

NOTE: Detent option is intended to hold ram in extended position due to loss of air pressure. Detent is not designed to hold GEO location. Tooling weight is not to exceed 25lbs [10kg] vertical

SEE SHEET 2 FOR 125 & 150 STROKE DIMENSIONS

SYM	CHANGES	DATE	BY
-----	---------	------	----

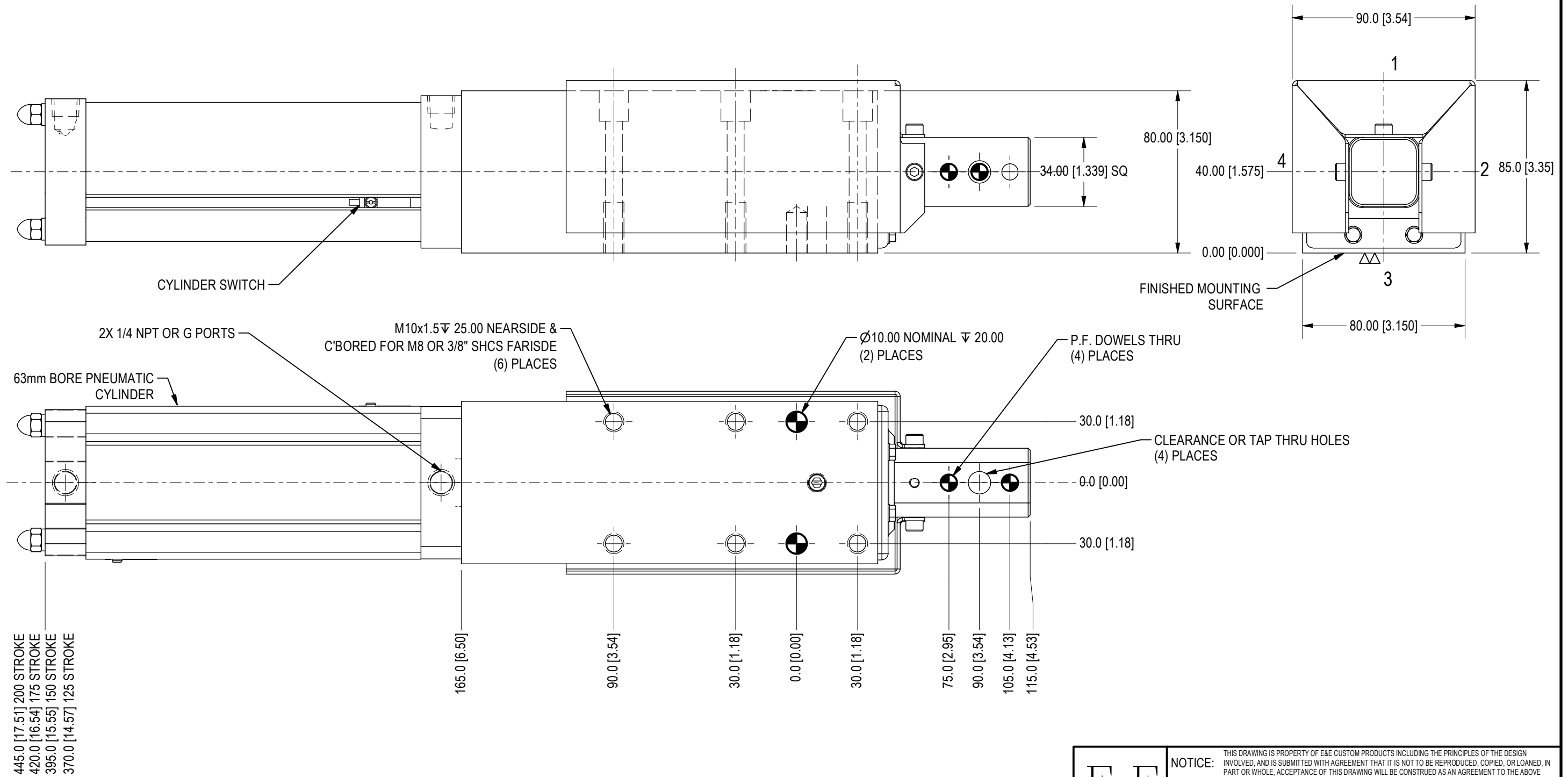


WEIGHTS =
14.0lbs for 25mm & 50mm Strokes
15.0lbs for 75mm Stroke
16.0lbs for 100mm Stroke
19.2lbs for 125mm Stroke
19.8lbs for 150mm Stroke
20.4lbs for 175mm Stroke
21.0lbs for 200mm Stroke

25mm STROKE USES REMOVABLE CYLINDER STOP TUBE
OPERATING PRESSURE - MIN 60psi = 289lbf [131.0kgf] EXT FORCE - 266lbf [120.6kgf] RETRACT FORCE
MAX 120psi = 579lbf [262.5kgf] EXT FORCE - 533lbf [241.7kgf] RETRACT FORCE
LOAD RATING - MAX TOOLING WT=55lbs [25kg], MAX GEO CONTACT OFFSET IS 150mm. MAX SIDE LOAD IS 110lbs [50kg]

<p>7200 MILLER DR. WARREN, MI 48092 EE-CP.COM</p>	<p>NOTICE: THIS DRAWING IS PROPERTY OF E&E CUSTOM PRODUCTS INCLUDING THE PRINCIPLES OF THE DESIGN INVOLVED, AND IS SUBMITTED WITH AGREEMENT THAT IT IS NOT TO BE REPRODUCED, COPIED, OR LOANED, IN PART OR WHOLE, ACCEPTANCE OF THIS DRAWING WILL BE CONSTRUED AS AN AGREEMENT TO THE ABOVE</p>		
	<p>TITLE 34 SERIES SHOT PIN</p>		
	<p>PART NO.</p>		
	<p>DRAWN BY: EE</p>	<p>CHK'D BY: EC</p>	<p>APPR'D BY: MH</p>
<p>DATE: 3/28/2023</p>	<p>DATE: 3/28/2023</p>	<p>DATE: 3/28/2023</p>	
<p>SCALE: 1/2</p>	<p>DWG. NO. GSP34-Template GESTAMP</p>		
<p>SHT 1 OF 2</p>			

SYM	CHANGES	DATE	BY
-----	---------	------	----



125,150,175 & 200 MM STROKE
DIMENSIONS

WEIGHTS =
18.5lbs for 125mm Strokes
19.5lbs for 150mm Stroke

	<small>NOTICE: THIS DRAWING IS PROPERTY OF E&E CUSTOM PRODUCTS INCLUDING THE PRINCIPLES OF THE DESIGN INVOLVED, AND IS SUBMITTED WITH AGREEMENT THAT IT IS NOT TO BE REPRODUCED, COPIED, OR LOANED, IN PART OR WHOLE, ACCEPTANCE OF THIS DRAWING WILL BE CONSTRUED AS AN AGREEMENT TO THE ABOVE</small>		
	TITLE 34 SERIES SHOT PIN		
	PART NO.		
	DRAWN BY: EE	CHK'D BY: EC	APPR'D BY: MH
DATE: 3/28/2023	DATE: 3/28/2023	DATE: 3/28/2023	
SCALE: 1/2	DWG. NO. GSP34-Template GESTAMP		
SHT 2 OF 2			

7200 MILLER DR.
WARREN, MI 48092
EE-CP.COM