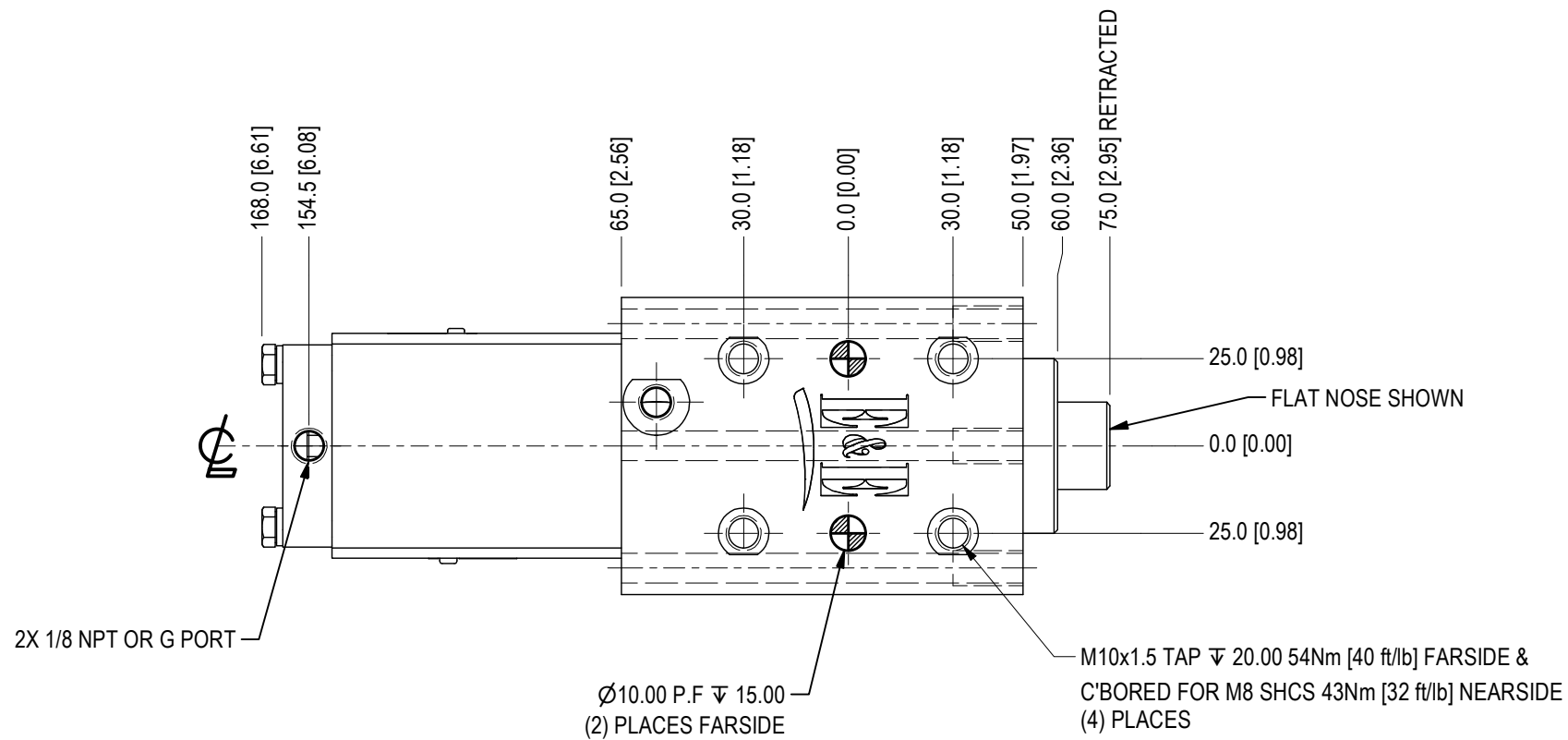


SYM	CHANGES	DATE	BY



ORDERING INFORMATION

ALP25- [] [] [] N [] S [] [] []

Stroke
 025 25mm Stroke
 050 50mm Stroke

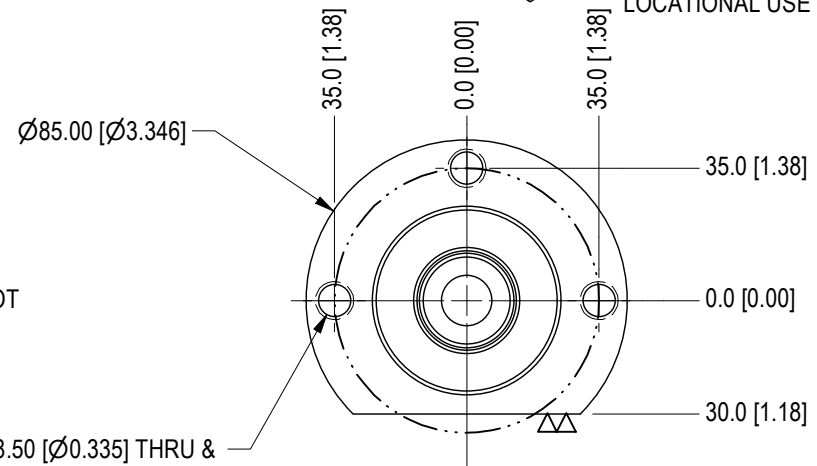
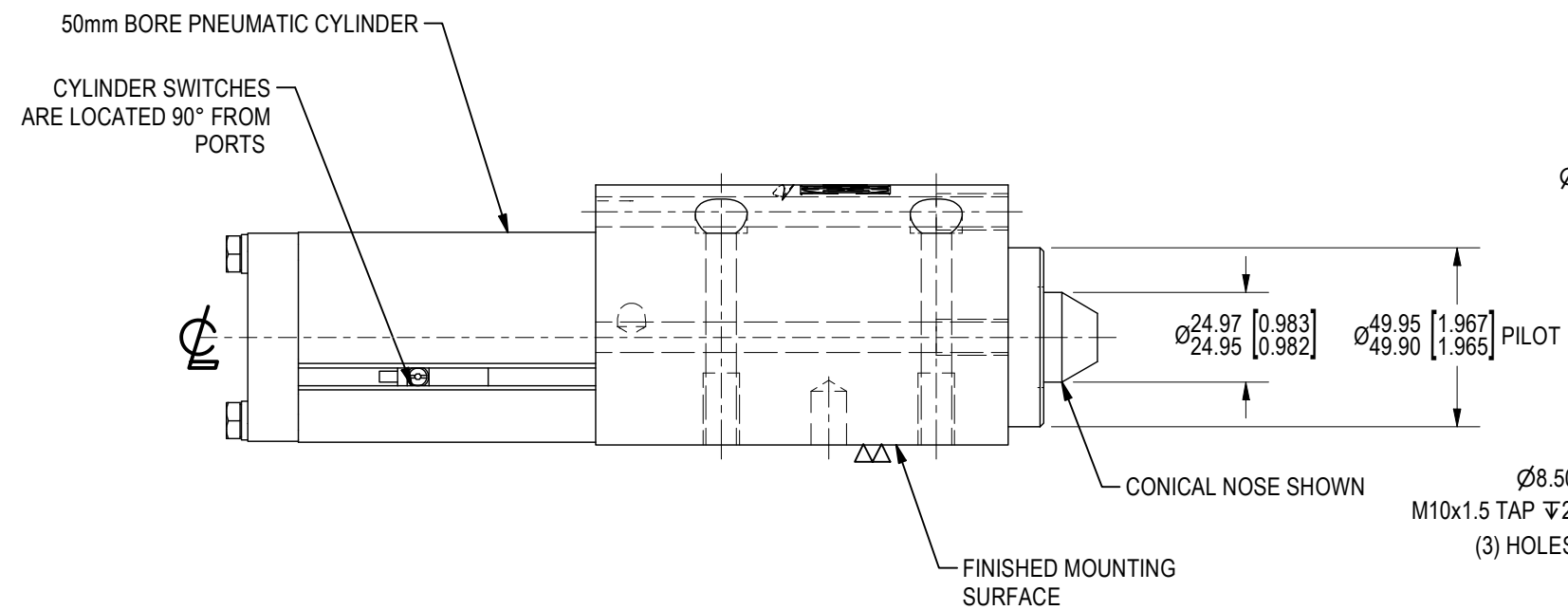
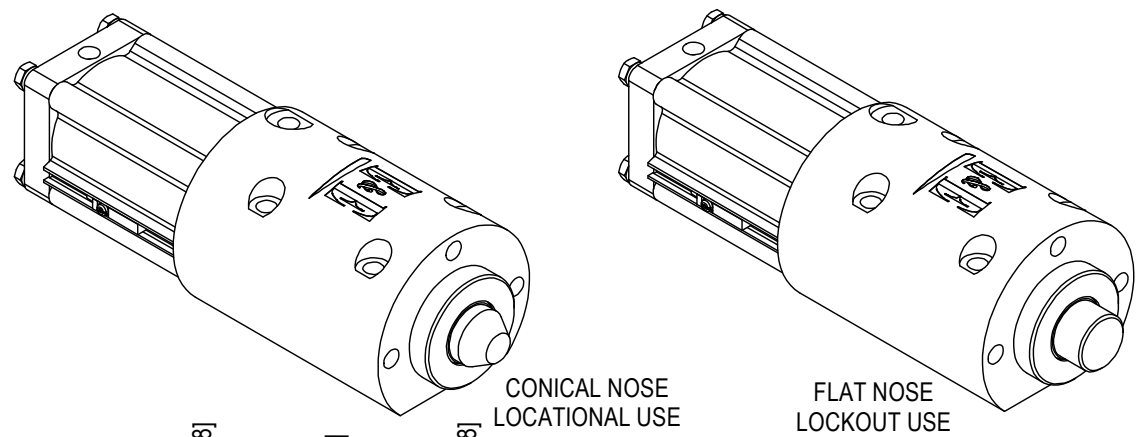
Actuator
 N Pneumatic - NPT Ports

Pin
 C Conical
 F Flat

Spring
 0 None
 S Spring

Switch
 S Sick

NOTE: Switch is 90 degrees from port position, either side



25mm STROKE USES REMOVABLE CYLINDER STOP TUBE
 OPERATING PRESSURE - MIN 60psi = 182lbf [82.5kgf] EXT FORCE - 137lbf [62.1kgf] RETRACT FORCE
 MAX 120psi = 362lbf [164.2kgf] EXT FORCE - 274lbf [124.3kgf] RETRACT FORCE
 SPRING FORCE EXTEND = 30lbf [13.6kg] 25mm STROKE - 20lbf [9.1kg] 50mm STROKE - 40lbf [18.1kg] RETURNED
 LOCKOUT LOAD CAPACITY = 2,500lbs (1,133kg)
 WEIGHT = 6.25lbs (2.8kg)

<p>7200 MILLER DR. WARREN, MI 48092 EE-CP.COM</p>	NOTICE: THIS DRAWING IS PROPERTY OF E&E CUSTOM PRODUCTS INCLUDING THE PRINCIPLES OF THE DESIGN INVOLVED, AND IS SUBMITTED WITH AGREEMENT THAT IT IS NOT TO BE REPRODUCED, COPIED, OR LOANED, IN PART OR WHOLE, ACCEPTANCE OF THIS DRAWING WILL BE CONSTRUED AS AN AGREEMENT TO THE ABOVE		
	TITLE 25mm PNEUMATIC LOCKOUT		
	PART NO.		
	DRAWN BY: EE	CHK'D BY: EC	APPR'D BY: MH
	DATE: 3/21/2023	DATE: 10/19/2023	DATE: 10/19/2023
SCALE: 1/2	DWG. NO. ALP25_TEMPLATE-GESTAMP		
SHT 1 OF 1			