

ORDERING INFORMATION

ASP24- [] [] [] [] N D08 C11 [] [] [] [] 0 [] [] [] 0

Stroke
100 & 125

Actuator
N Pneumatic - NPT Ports

Ram Dowels
D08 (Dowels are Nominal)

Ram Holes
C11 Clearance holes

Switch
E Efector
T Turck

Switch Position
E S01 Ext Pos
R S01 Ret Pos (Use only if required)

Ram Position
0 0 Degree (Shown)
9 90 Degree

Port Position
1 Port Position (Shown)
2 Port Position
3 Port Position
4 Port Position

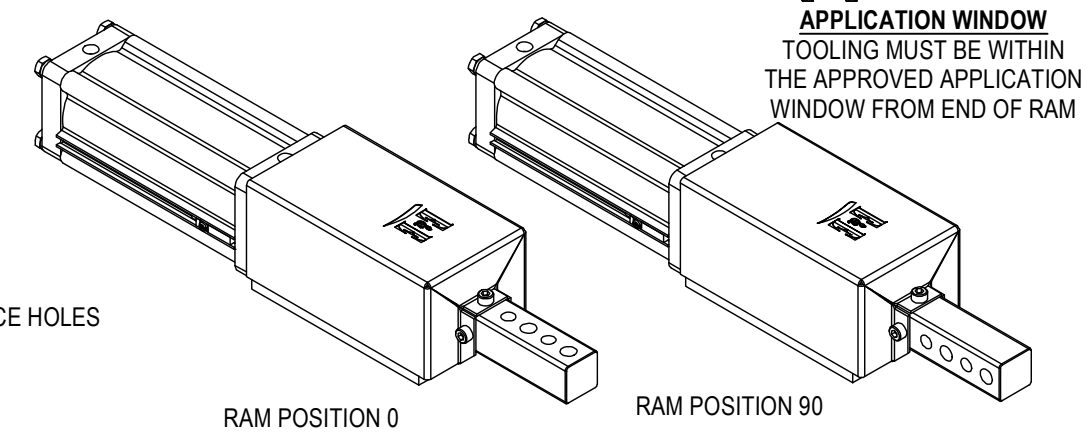
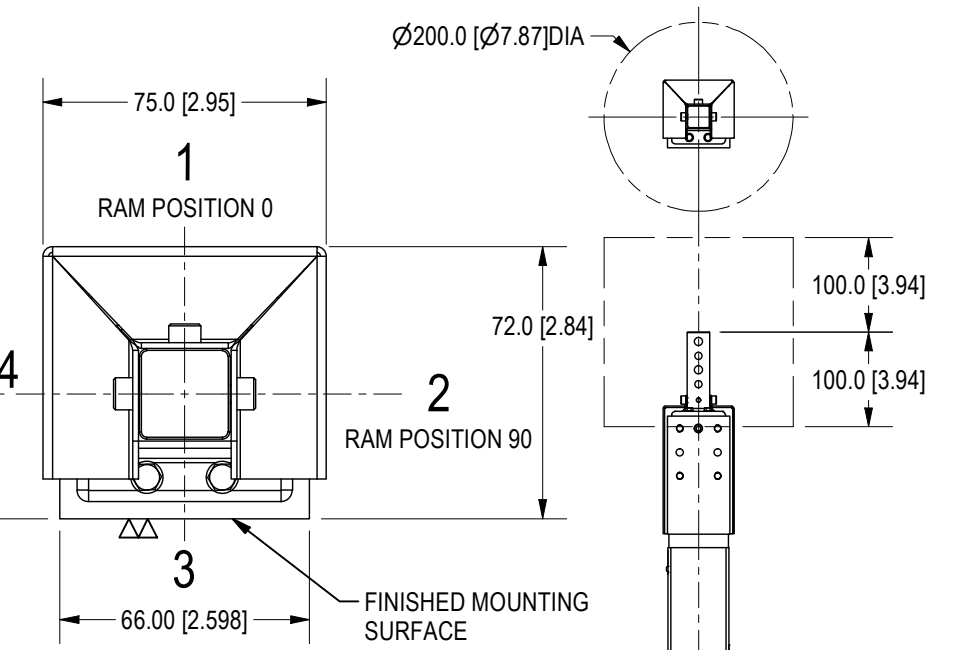
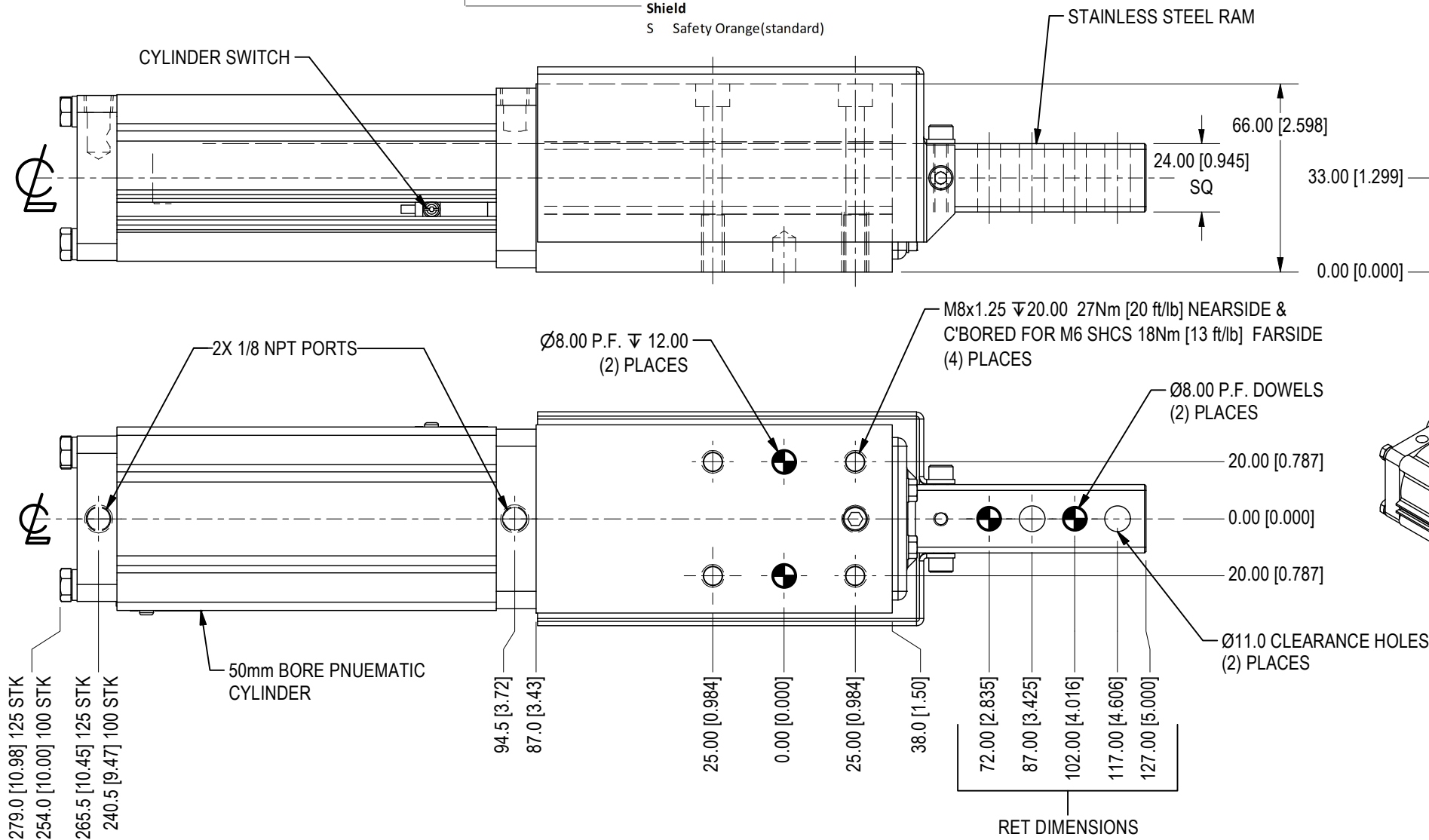
Shield
S Safety Orange(standard)

SYM

CHANGES

DATE

BY



OPERATING PRESSURE - MIN 60psi = 182lbf [82.5kgf] EXT FORCE - 169lbf [76.6kgf] RETRACT FORCE
 MAX 120psi = 362lbf [164.2kgf] EXT FORCE - 338.5lbf [153.5kgf] RETRACT FORCE
 LOAD RATING - MAX TOOLING WT=22.5lbs [10kg], MAX GEO CONTACT OFFSET IS 100mm. MAX SIDE LOAD IS 55lbs [25kg]

WEIGHTS =
 8.5lbs for 100mm Stroke
 9.0lbs for 125mm Stroke

<p>E & E CUSTOM PRODUCTS</p> <p>7200 MILLER DR. WARREN, MI 48092 EE-CP.COM</p>	NOTICE: THIS DRAWING IS PROPERTY OF E&E CUSTOM PRODUCTS INCLUDING THE PRINCIPLES OF THE DESIGN INVOLVED, AND IS SUBMITTED WITH AGREEMENT THAT IT IS NOT TO BE REPRODUCED, COPIED, OR LOANED, IN PART OR WHOLE, ACCEPTANCE OF THIS DRAWING WILL BE CONSTRUED AS AN AGREEMENT TO THE ABOVE		
	TITLE 24 SERIES LONG STROKE SHOT PIN		
	PART NO.		
	DRAWN BY:	CHK'D BY: EC	APPR'D BY: TT
DATE:	DATE: 10/18/2023	DATE: 10/18/2023	
SCALE: 1/2	DWG. NO.		
SHT 1 OF 1	ASP24-Long Stroke Template - Flexcan - P207		