

**ORDERING INFORMATION**

ASP34- [ ] [ ] [ ] [ ] N D06 C09 [ ] S [ ] O [ ] E O

**Stroke**  
025, 050, 075, 100, 125, 150mm

**Actuator**  
N Pneumatic - NPT Ports

**Ram Dowels**  
D06 Dowels are nominal

**Ram Holes**  
C09 Clearance holes

**Switch**  
S Sick (Cylinder Switch only) Weld Immune 100-150 Strokes  
P Pepperl & Fuchs (World Switch Only) 25-75 Strokes

**Shield**  
S Safety Orange (Standard)

**RAP**  
0 None

**Switch Position**  
E S01 Ext Pos  
R S01 Ret Pos (Use Only if Required)

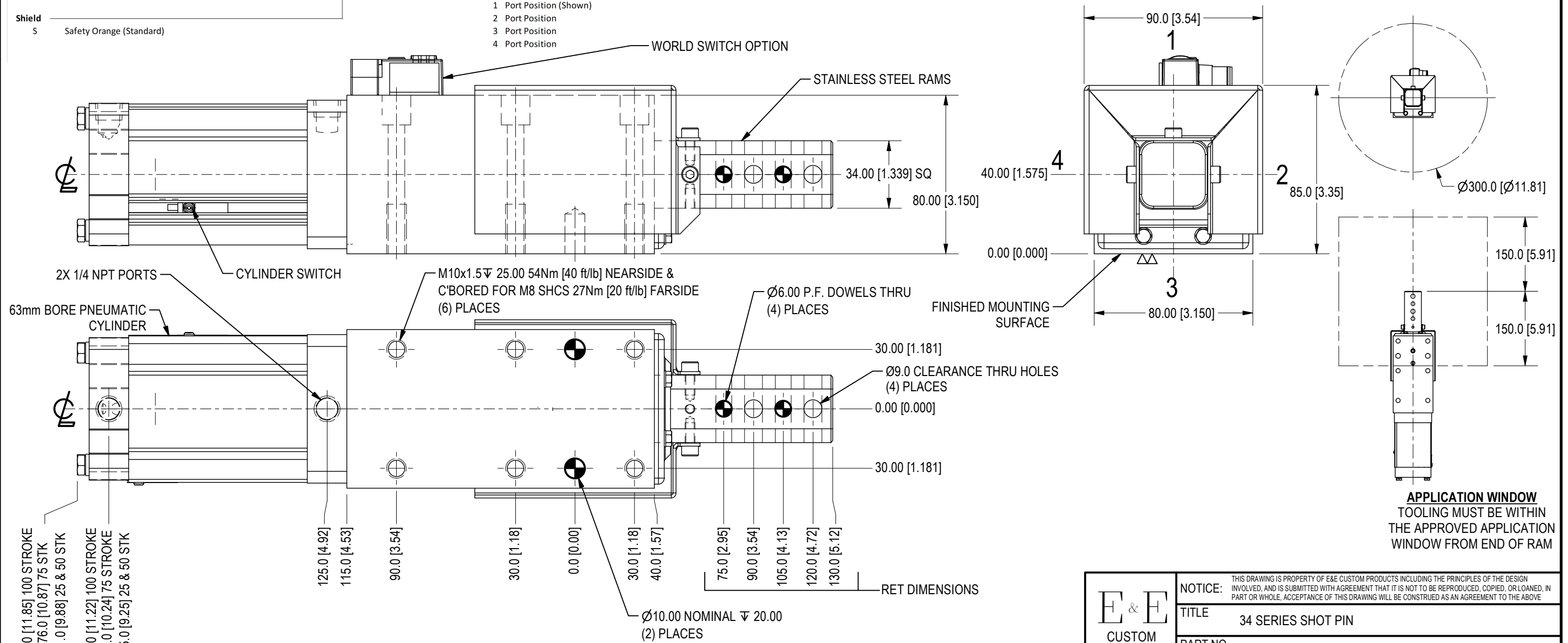
**Switch Type**  
C Cylinder Switch 100-150 strokes  
W World Switch 25-75 Strokes

**Detent (Non Rap Only)**  
0 None

**Port Position**  
1 Port Position (Shown)  
2 Port Position  
3 Port Position  
4 Port Position

(1) ASP430 SPACER WILL BE PROVIDED FOR INTERCHANGEABILITY

SEE SHEET 2 FOR 125 & 150 STROKE DIMENSIONS



**APPLICATION WINDOW**  
TOOLING MUST BE WITHIN THE APPROVED APPLICATION WINDOW FROM END OF RAM

- 301.0 [11.85] 100 STROKE
- 276.0 [10.87] 75 STK
- 251.0 [9.88] 25 & 50 STK
- 285.0 [11.22] 100 STROKE
- 260.0 [10.24] 75 STROKE
- 235.0 [9.25] 25 & 50 STK

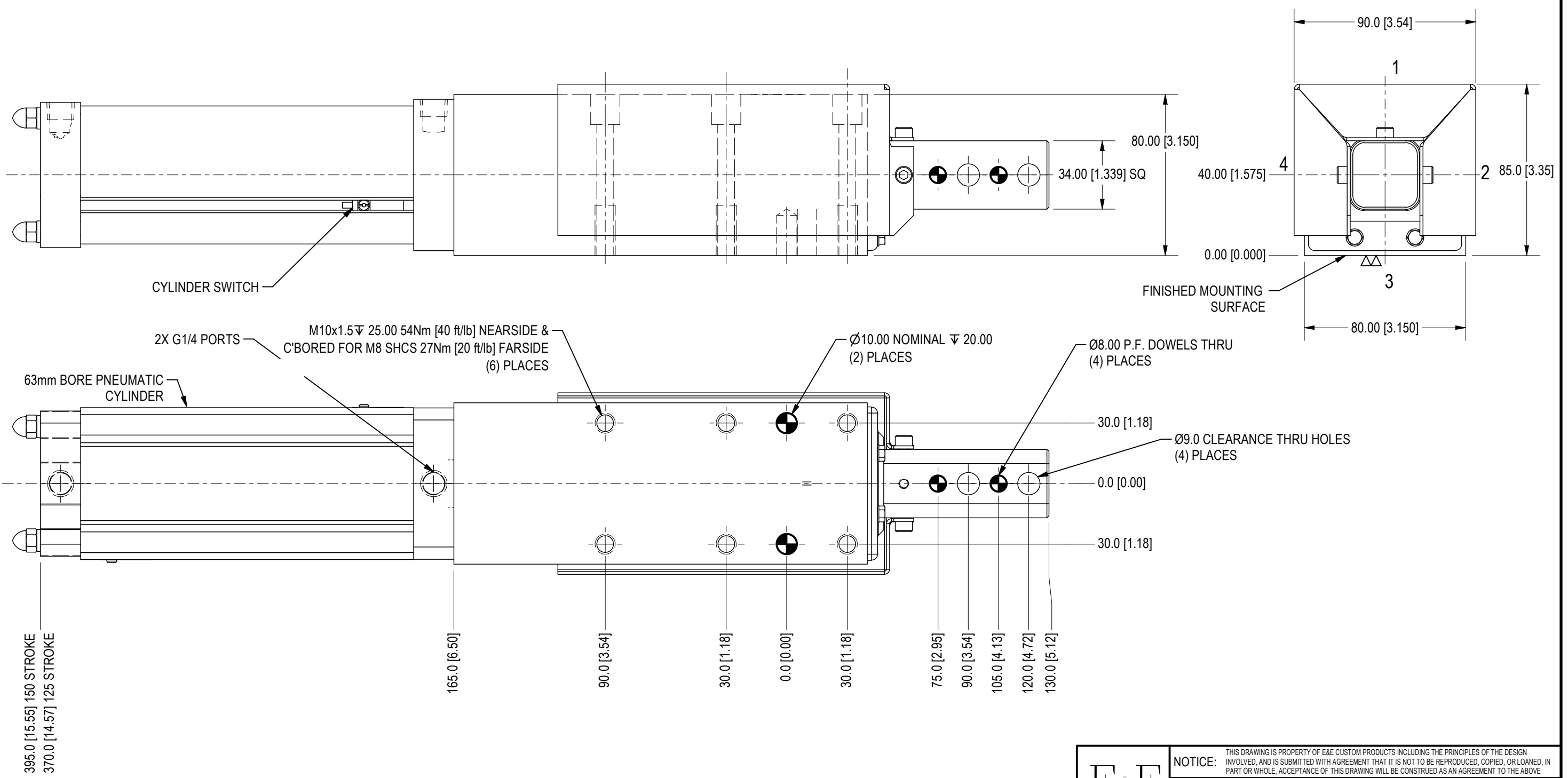
25mm STROKE USES REMOVABLE CYLINDER STOP TUBE  
 OPERATING PRESSURE - MIN 60psi = 289lbf [131.0kgf] EXT FORCE - 266lbf [120.6kgf] RETRACT FORCE  
 MAX 120psi = 579lbf [262.5kgf] EXT FORCE - 533lbf [241.7kgf] RETRACT FORCE  
 LOAD RATING - MAX TOOLING WT=55lbs [25kg], MAX GEO CONTACT OFFSET IS 150mm. MAX SIDE LOAD IS 110lbs [50kg]

**WEIGHTS =**  
 14.0lbs for 25mm & 50mm Strokes  
 15.0lbs for 75mm Stroke  
 16.0lbs for 100mm Stroke

SYM	CHANGES	DATE	BY
-----	---------	------	----

<p>7200 MILLER DR. WARREN, MI 48092 EE-CP.COM</p>	NOTICE: THIS DRAWING IS PROPERTY OF E&E CUSTOM PRODUCTS INCLUDING THE PRINCIPLES OF THE DESIGN INVOLVED, AND IS SUBMITTED WITH AGREEMENT THAT IT IS NOT TO BE REPRODUCED, COPIED, OR LOANED, IN PART OR WHOLE, ACCEPTANCE OF THIS DRAWING WILL BE CONSTRUED AS AN AGREEMENT TO THE ABOVE		
	TITLE 34 SERIES SHOT PIN		
	PART NO.		
	DRAWN BY: EE	CHK'D BY: EC	APPR'D BY: MH
	DATE: 6/14/2022	DATE: 10/18/2023	DATE: 10/18/2023
SCALE: 1/2	DWG. NO.		
SHT 1 OF 2	ASP34-Template - STELLANTIS		

SYM	CHANGES	DATE	BY



125 & 150 MM STROKE DIMENSIONS

WEIGHTS =  
 18.5lbs for 125mm Strokes  
 19.5lbs for 150mm Stroke

 7200 MILLER DR. WARREN, MI 48092 EE-CP.COM	NOTICE: THIS DRAWING IS PROPERTY OF E&E CUSTOM PRODUCTS INCLUDING THE PRINCIPLES OF THE DESIGN INVOLVED, AND IS SUBMITTED WITH AGREEMENT THAT IT IS NOT TO BE REPRODUCED, COPIED, OR LOANED, IN PART OR WHOLE, ACCEPTANCE OF THIS DRAWING WILL BE CONSTRUED AS AN AGREEMENT TO THE ABOVE		
	TITLE 34 SERIES SHOT PIN		
	PART NO.		
	DRAWN BY: EE	CHK'D BY: EC	APPR'D BY: MH
	DATE: 6/14/2022	DATE: 10/18/2023	DATE: 10/18/2023
SCALE: 1/2	DWG. NO. ASP34-Template - STELLANTIS		
SHT 2 OF 2	SHT 2 OF 2		