

**ORDERING INFORMATION**

ASP50- [ ] [ ] [ ] [ ] G D08 C09 S [ ] [ ] [ ] O C E O

**Stroke**  
025, 050, 075, 100, 125 & 150

**Actuator**  
G Pneumatic - G Ports

**Ram Dowels**  
D08 (Dowels are Nominal)

**Ram Holes**  
C09 Clearance holes

**Switch**  
S Sick (Standard) Weld Immune

**Shield**  
0 None  
S Safety Orange (Standard)

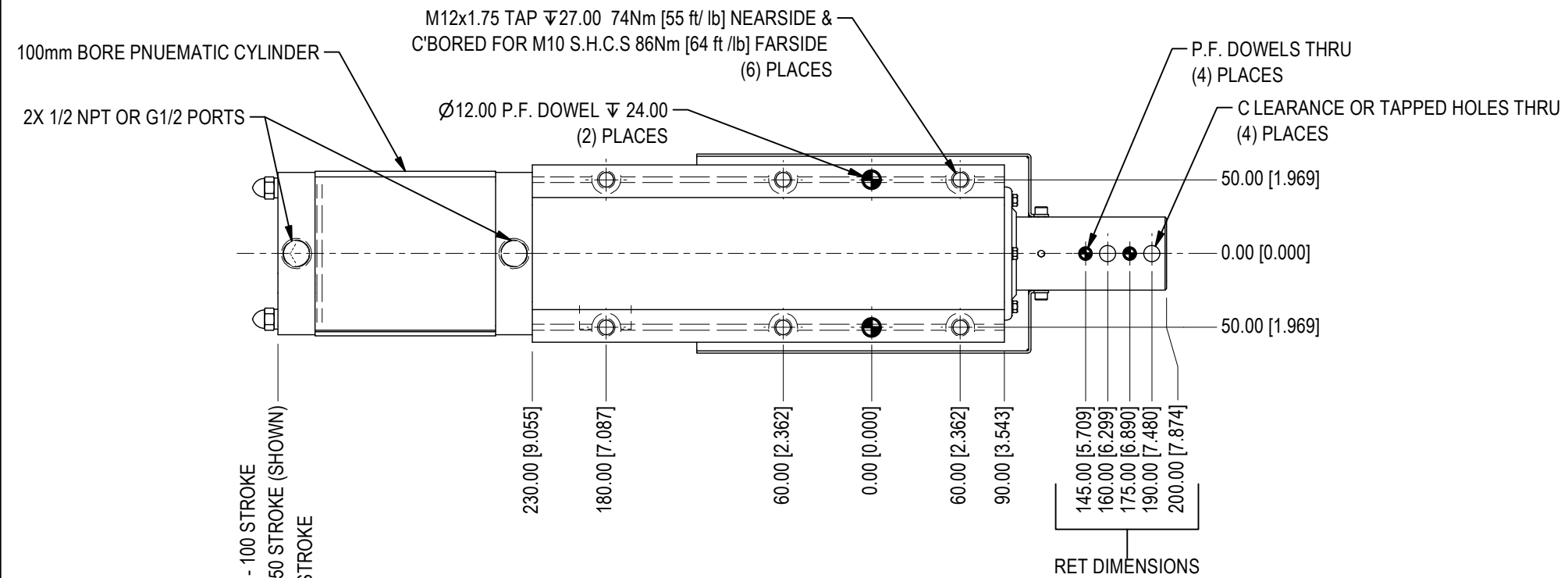
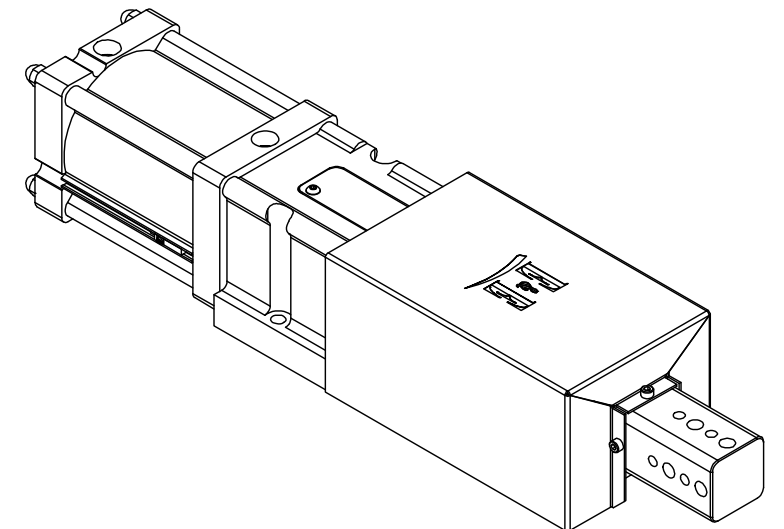
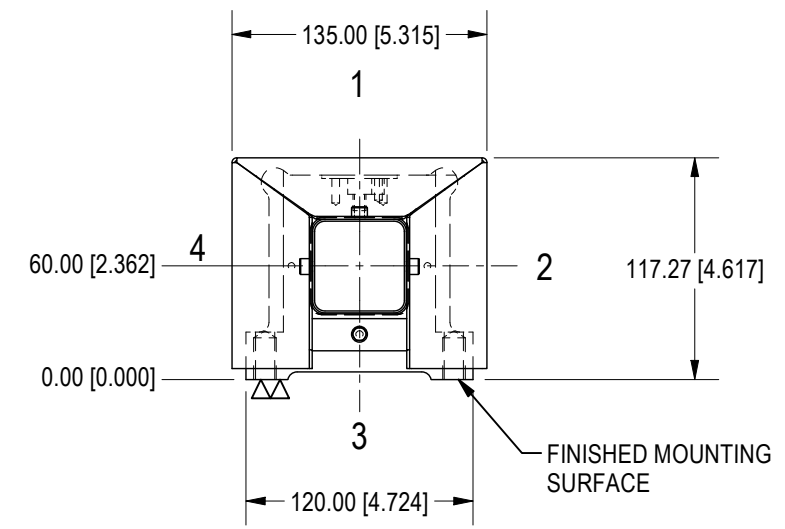
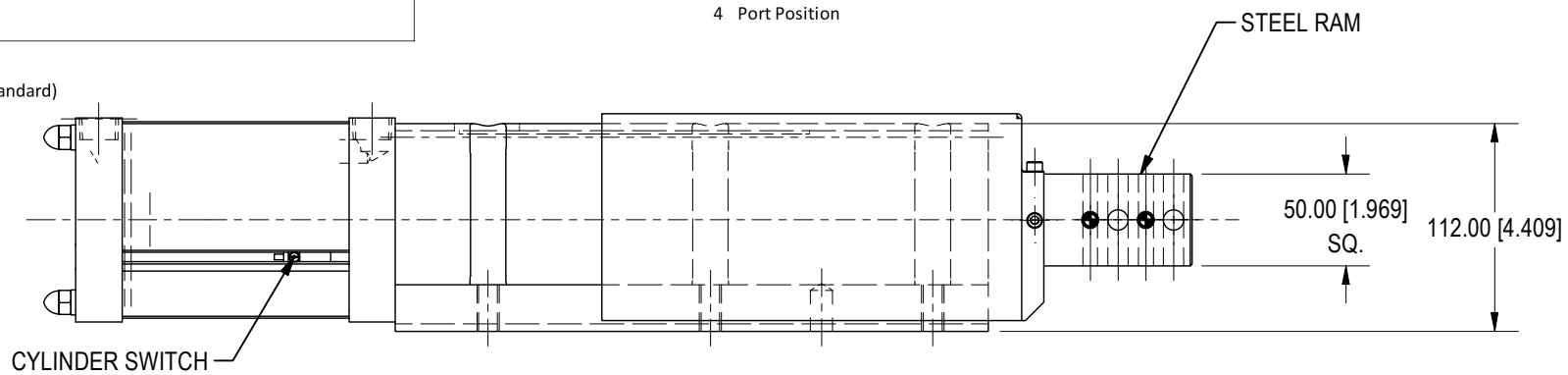
**RAP**  
0 None

**Switch Position**  
E S01 Ext Pos

**Switch Type**  
C Cylinder Switch

**Port Position**  
1 Port Position (Shown)  
2 Port Position  
3 Port Position  
4 Port Position

(1) ASP452 SPACER WILL BE PROVIDED FOR INTERCHANGEABILITY



502.50 [19.783] 150 - 100 STROKE  
402.50 [15.846] 75 - 50 STROKE (SHOWN)  
352.50 [13.888] 25 STROKE

50,100,125 & 150mm STROKE USE REMOVABLE CYLINDER STOP TUBE  
OPERATING PRESSURE  
MIN 60psi = 730.lbf [331.3kgf] EXT FORCE - 547lbf [248.4kgf] RETRACT FORCE  
MAX 100psi = 1217bf [2683.4kgf] EXT FORCE - 913lbf [414.1kgf] RETRACT FORCE

WEIGHTS =  
45.5lbs for 25mm Stroke  
48.5lbs for 50-75mm Stroke  
53.5lbs for 100-175mm Stroke  
54.5lbs for 200mm Stroke

 7200 MILLER DR. WARREN, MI 48092 EE-CP.COM	NOTICE: THIS DRAWING IS PROPERTY OF E&E CUSTOM PRODUCTS INCLUDING THE PRINCIPLES OF THE DESIGN INVOLVED, AND IS SUBMITTED WITH AGREEMENT THAT IT IS NOT TO BE REPRODUCED, COPIED, OR LOANED, IN PART OR WHOLE, ACCEPTANCE OF THIS DRAWING WILL BE CONSTRUED AS AN AGREEMENT TO THE ABOVE		
	TITLE 50 SERIES SHOT PIN		
	PART NO.		
	DRAWN BY: EE	CHK'D BY: EC	APPR'D BY: MH
	DATE: 3/30/2022	DATE: 10/23/2023	DATE: 10/23/2023
SCALE: 1/4	DWG. NO. ASP50-TEMPLATE_GM		
SHT 1 OF 2			

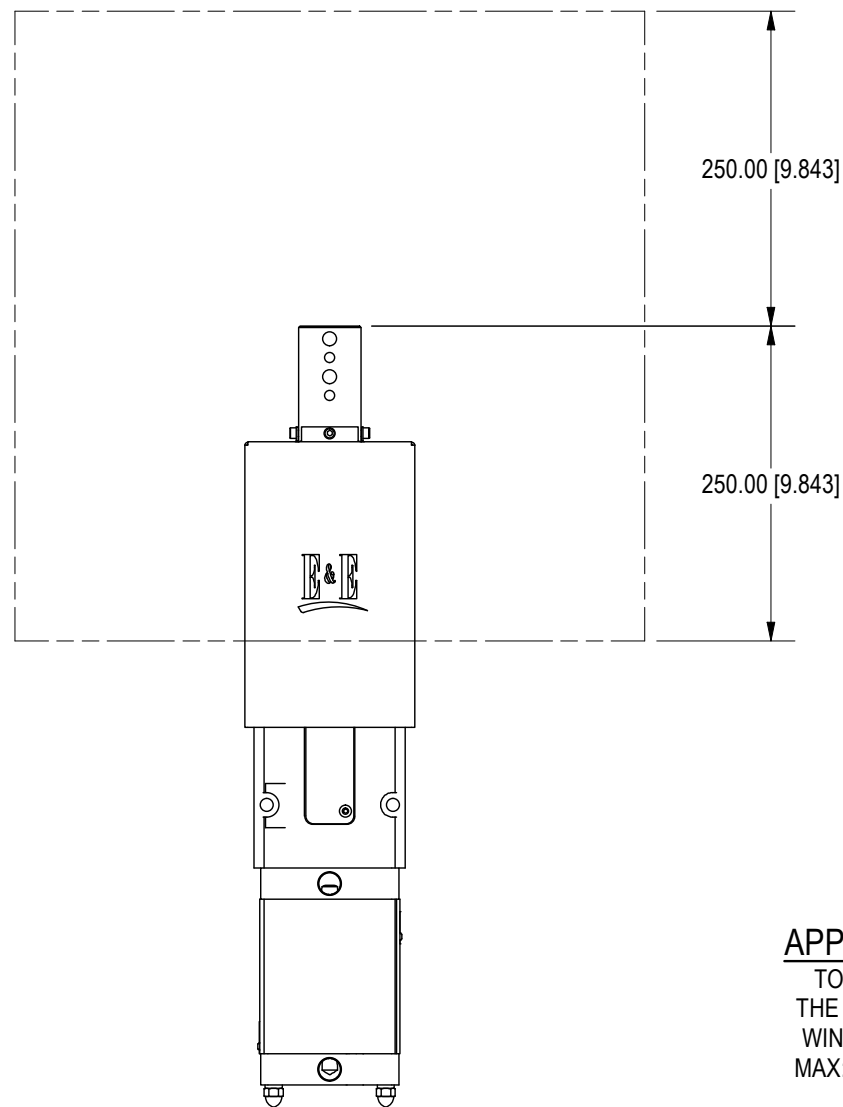
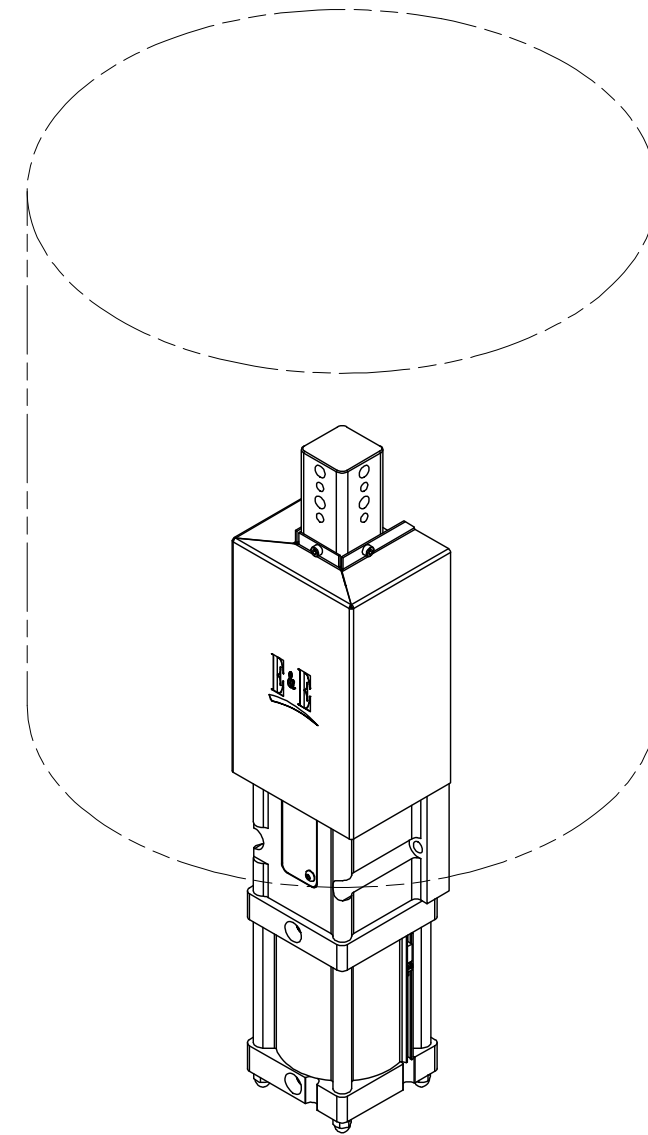
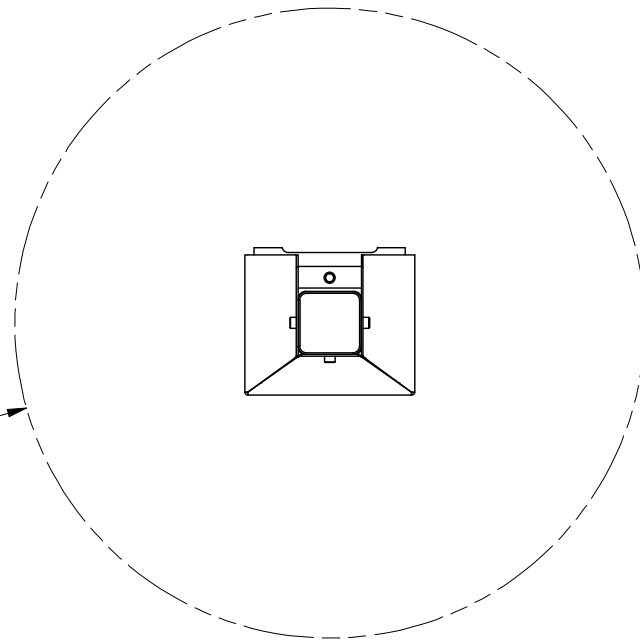
SYM

CHANGES

DATE

BY

Ø500.00 [Ø19.685]



**APPLICATION WINDOW**

TOOLING MUST BE WITHIN THE APPROVED APPLICATION WINDOW FROM END OF RAM  
MAX: 250lbf @ 250.00mm [9.84"]

	<small>NOTICE: THIS DRAWING IS PROPERTY OF E&amp;E CUSTOM PRODUCTS INCLUDING THE PRINCIPLES OF THE DESIGN INVOLVED, AND IS SUBMITTED WITH AGREEMENT THAT IT IS NOT TO BE REPRODUCED, COPIED, OR LOANED, IN PART OR WHOLE, ACCEPTANCE OF THIS DRAWING WILL BE CONSTRUED AS AN AGREEMENT TO THE ABOVE</small>		
	<b>TITLE</b> 50 SERIES SHOT PIN		
<b>PART NO.</b>			
<b>DRAWN BY:</b> EE	<b>CHK'D BY:</b> EC	<b>APPR'D BY:</b> MH	
<b>DATE:</b> 3/30/2022	<b>DATE:</b> 10/23/2023	<b>DATE:</b> 10/23/2023	
<b>SCALE:</b> 1/6	<b>DWG. NO.</b> ASP50-TEMPLATE_GM		
<b>SHT</b> 2 <b>OF</b> 2			

7200 MILLER DR.  
WARREN, MI 48092  
EE-CP.COM