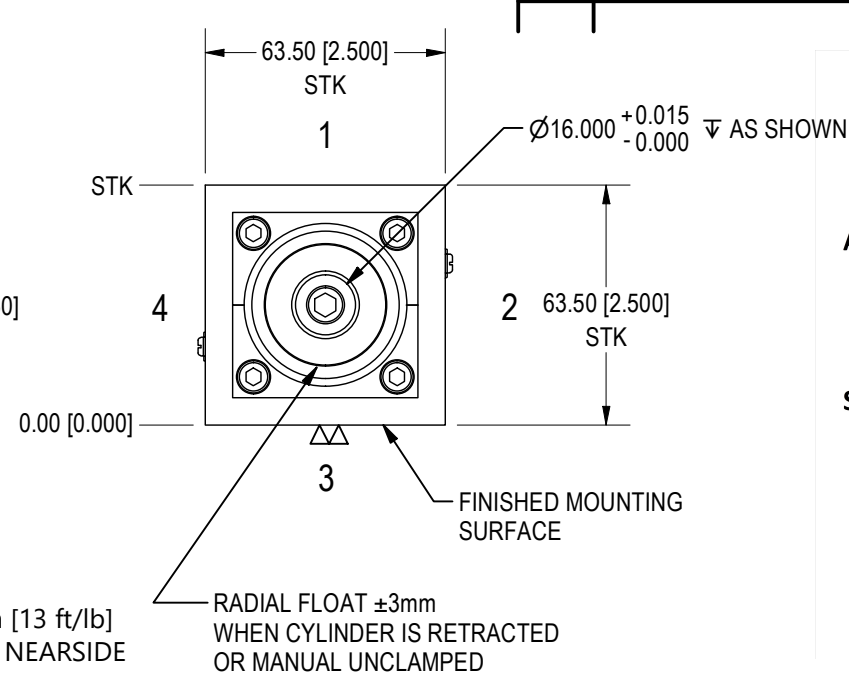
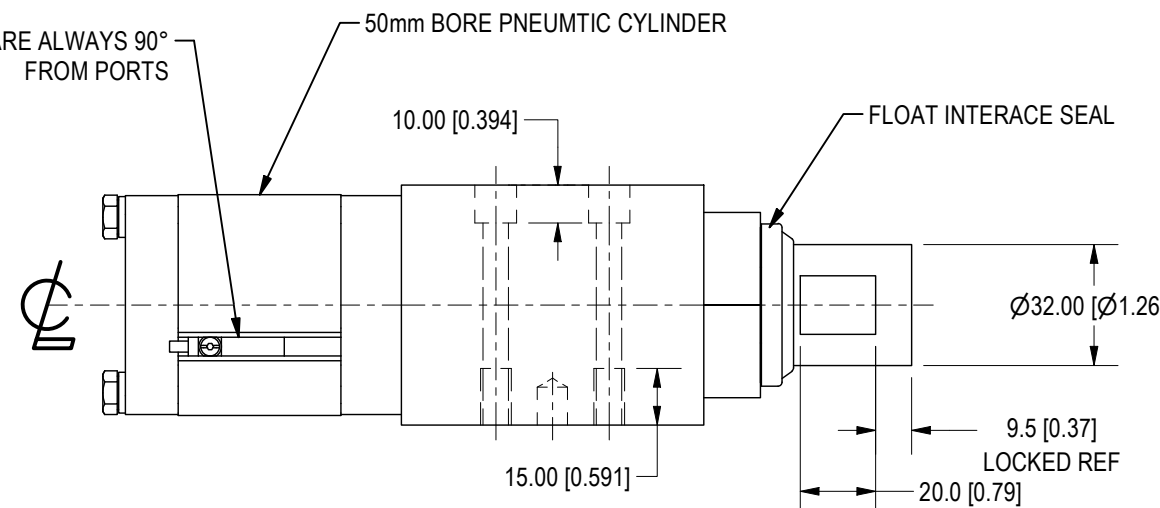
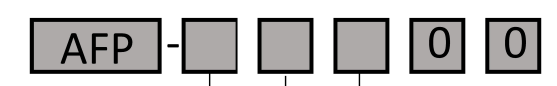


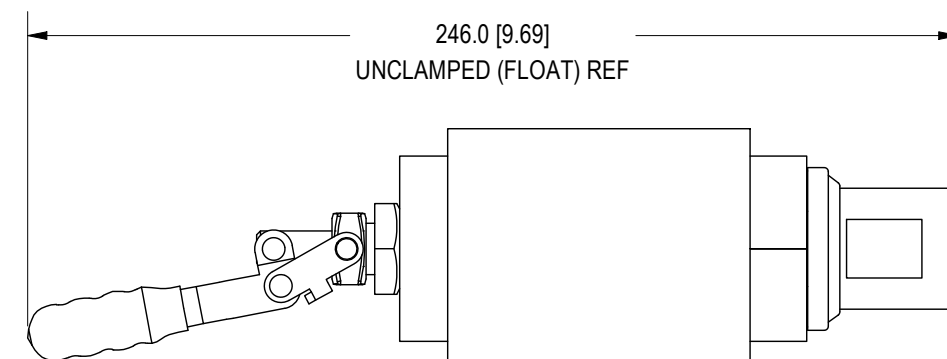
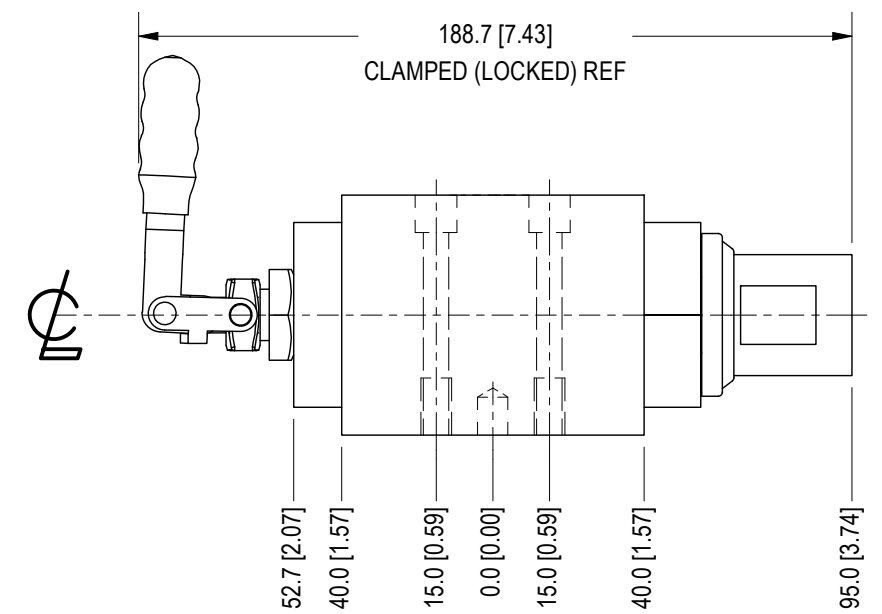
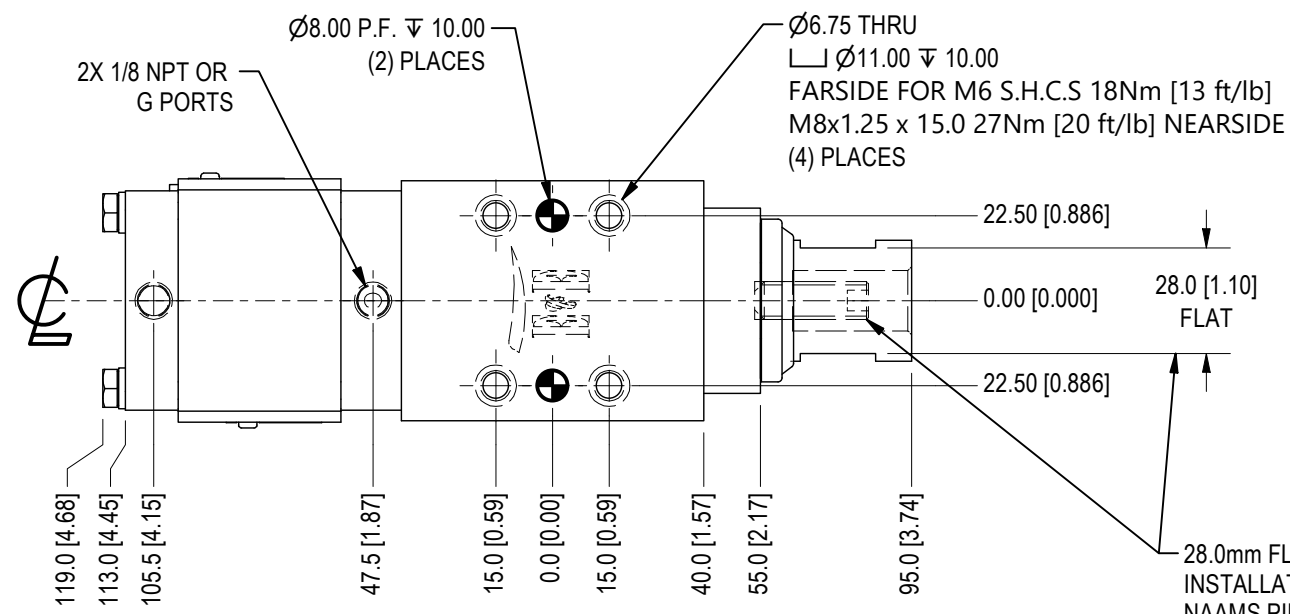
SWITCHES ARE ALWAYS 90° FROM PORTS



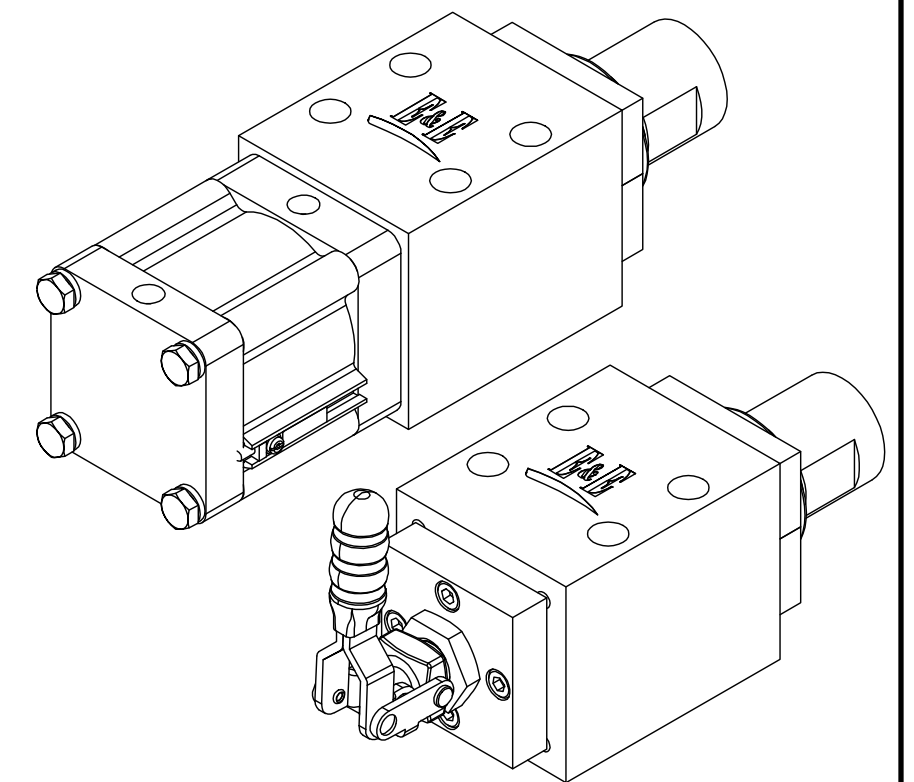
ORDERING INFORMATION



- Actuator**
- G G Ports
 - M Manual
- Port or Handle Position**
- 1 Position (Shown)
 - 2 Position
 - 3 Position
 - 4 Position
- Switch**
- S Sick (Standard) Weld Immune
 - 0 Manual



MANUAL OPTION



NOTE: LOAD PART RIGID (CYLINDER EXTENDED OR MANUALLY CLAMPED) UNLOAD PART FLOATING (CYLINDER RETRACTED OR MANUALLY UNCLAMPED)
 OPERATING PRESSURE = 60 psi MIN - 120psi MAX WEIGHT = 4.5lbs [2.04kg]

<p>E & E CUSTOM PRODUCTS</p>	<small>NOTICE: THIS DRAWING IS PROPERTY OF E&E CUSTOM PRODUCTS INCLUDING THE PRINCIPLES OF THE DESIGN INVOLVED, AND IS SUBMITTED WITH AGREEMENT THAT IT IS NOT TO BE REPRODUCED, COPIED, OR LOANED, IN PART OR WHOLE, ACCEPTANCE OF THIS DRAWING WILL BE CONSTRUED AS AN AGREEMENT TO THE ABOVE</small>		
	TITLE 50mm BORE PNEUMATIC OR MANUAL FLOAT PIN		
	PART NO.		
	DRAWN BY:	CHK'D BY: EC	APPR'D BY: MH
	DATE: 11/9/2023	DATE: 11/9/2023	DATE: 11/9/2023
7200 MILLER DR. WARREN, MI 48092 EE-CP.COM	SCALE: 1/2	DWG. NO. AFP_Template GM	SHT 1 OF 1