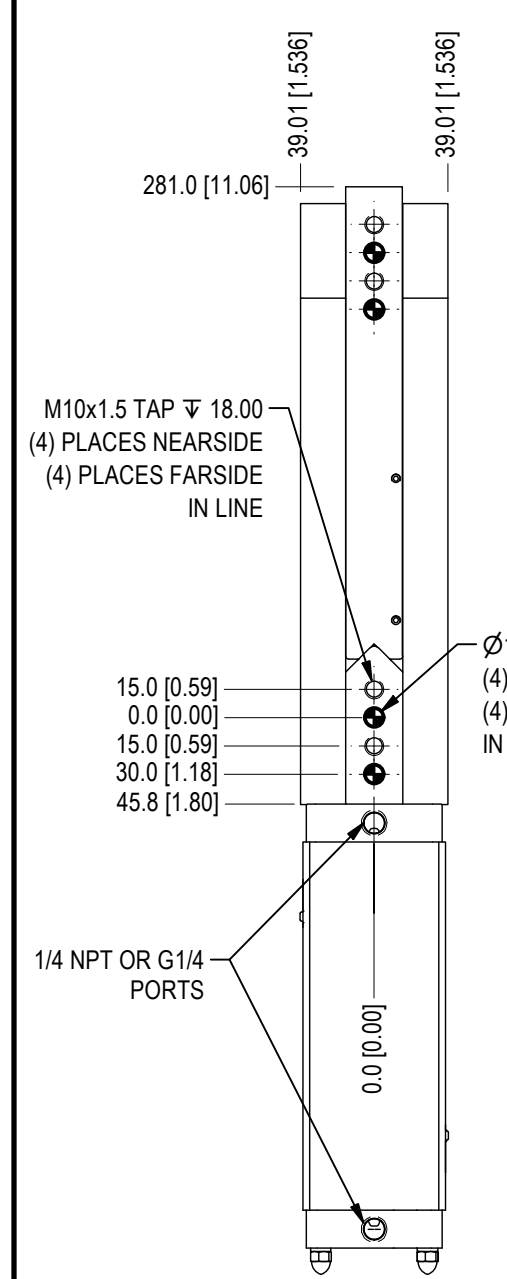


SYM	CHANGES	DATE	BY
-----	---------	------	----

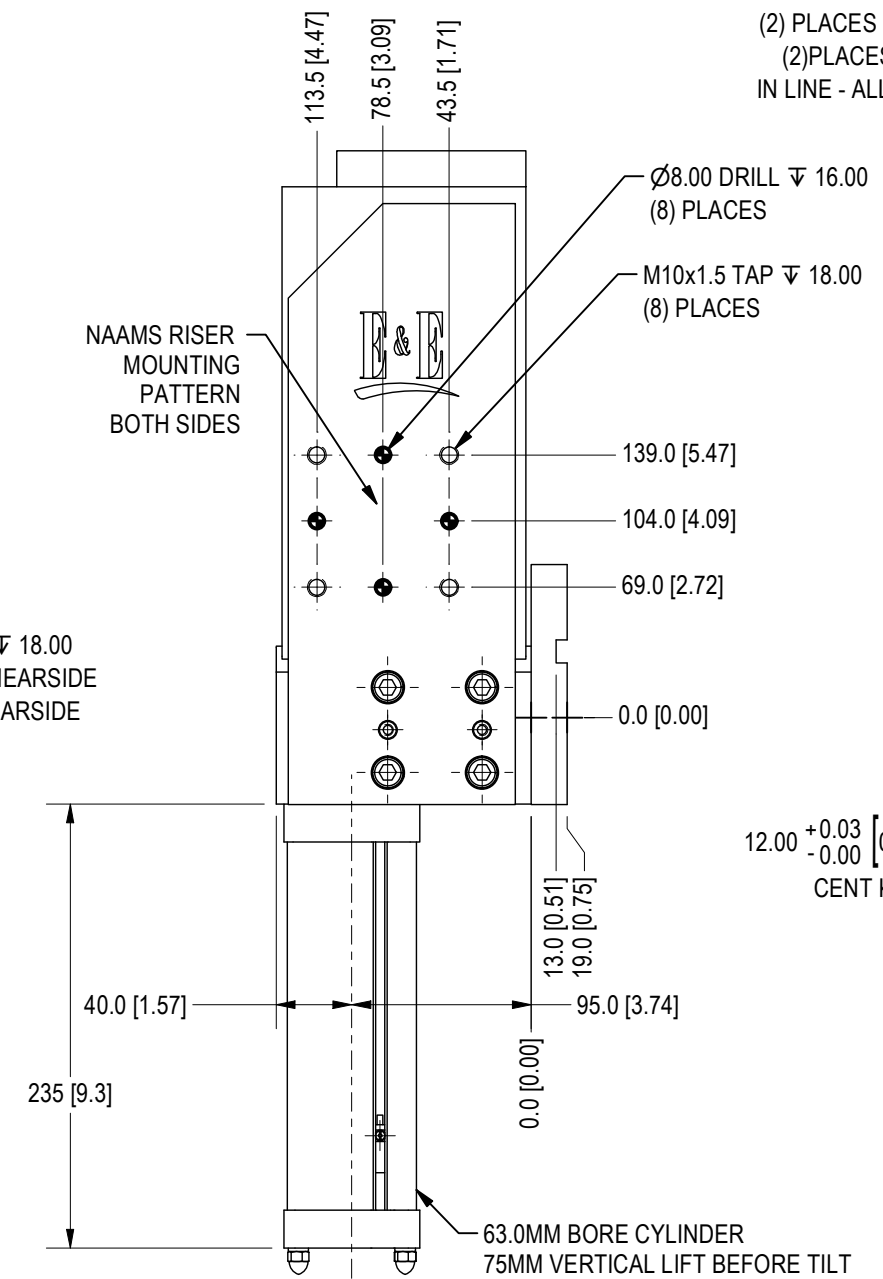
ORDERING INFORMATION		
PPP75- []		
TIP ANGLE	025, 030, 035, 040, 045	Top Plate
		0 None (Standard)
		T Top Plate
Ports		Switch Position
N	Pneumatic - NPT Ports	E S01 Ext Pos
G	Pneumatic - G Ports	R S01 Ret Pos
Acuator		Switch Type
O	Standard	C Cylinder Switch
L	Locking	
Mounting		Port Position
O	No plate (standard)	1 Port Position
A	Mounting Plate as Shown	2 Port Position
B	Mounting Plate opposite	3 Port Position
Switch		4 Port Position (Shown)
E	Efactor Weld Immune	
B	Balluff	
S	Sick (Standard) Weld Immune	
T	Turck	

STANDARD SHOWN



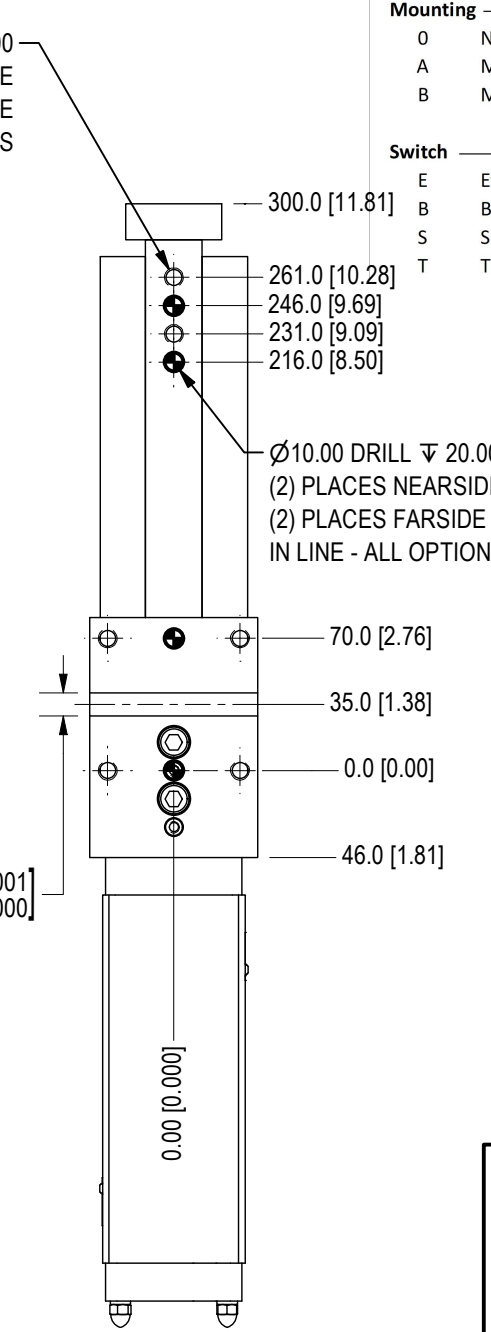
STANDARD UNIT SHOWN

MOUNTING PLATE OPTION "A" AND TOP PLATE OPTION "T" SHOWN

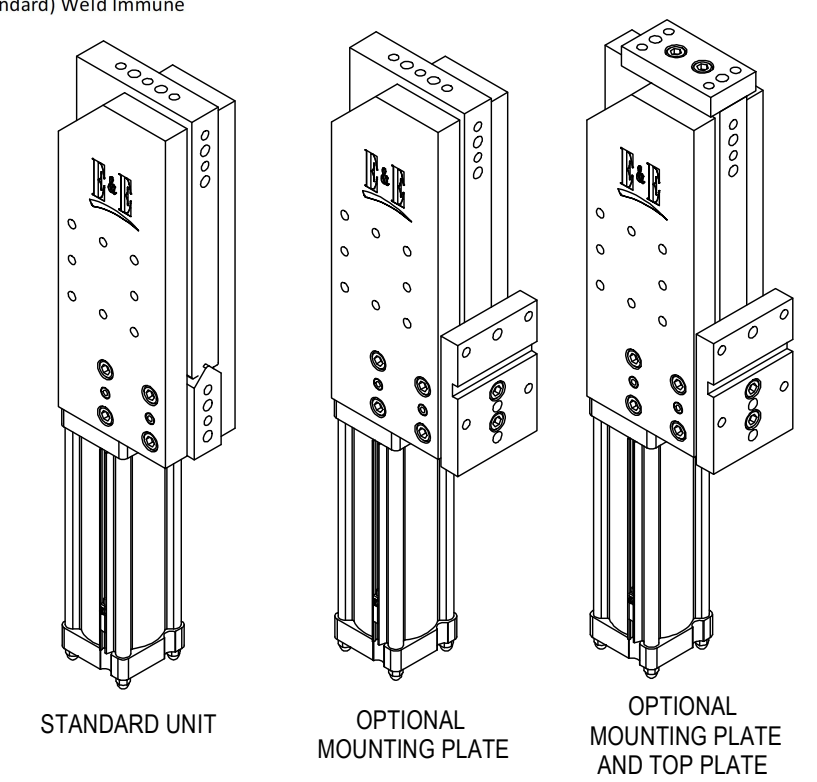


MOUNTING PLATE OPTION "A" AND TOP PLATE OPTION "T" SHOWN

M10x1.5 TAP ∇ 20.00 (2) PLACES NEARISIDE (2) PLACES FARISIDE IN LINE - ALL OPTIONS

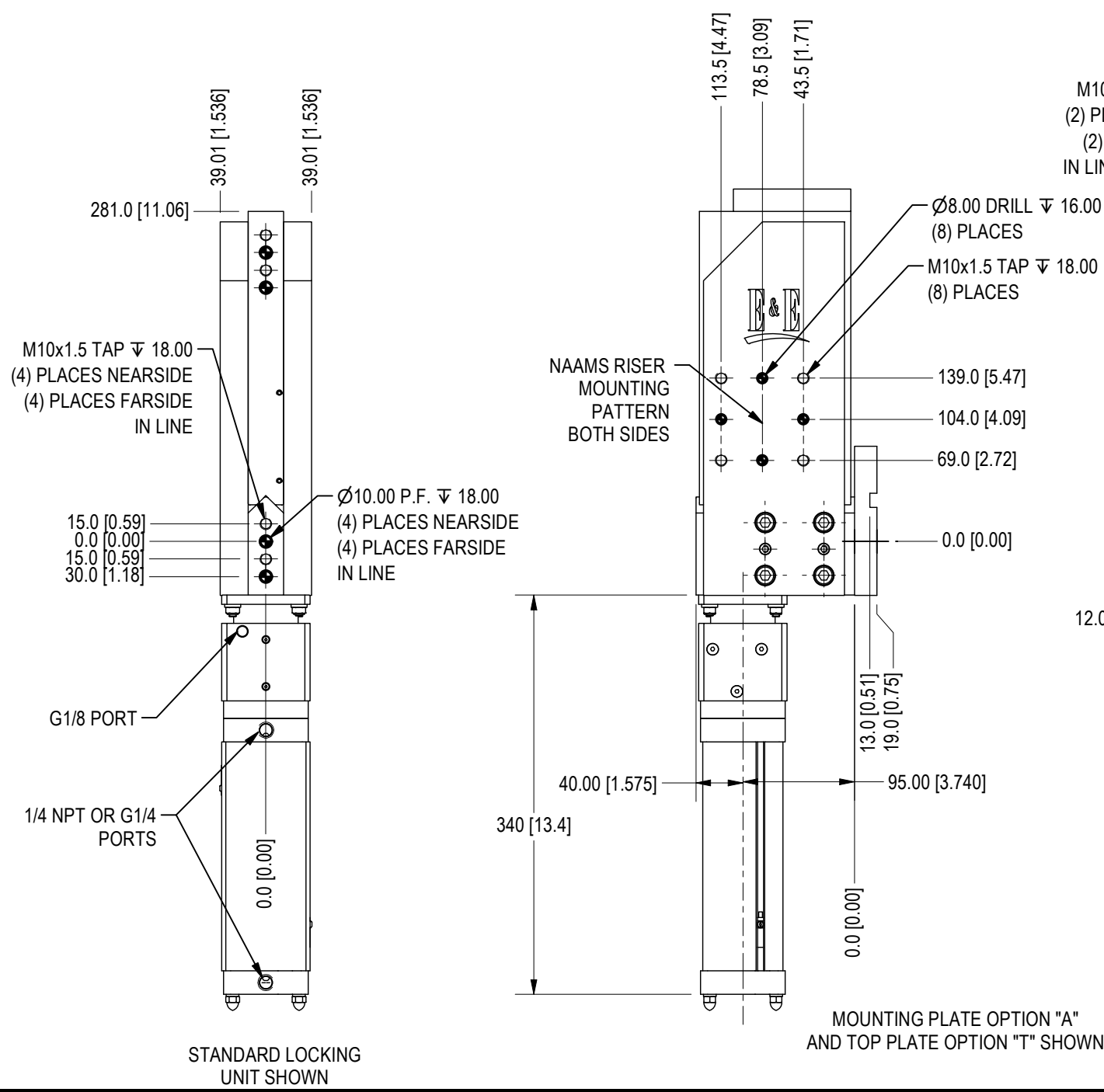
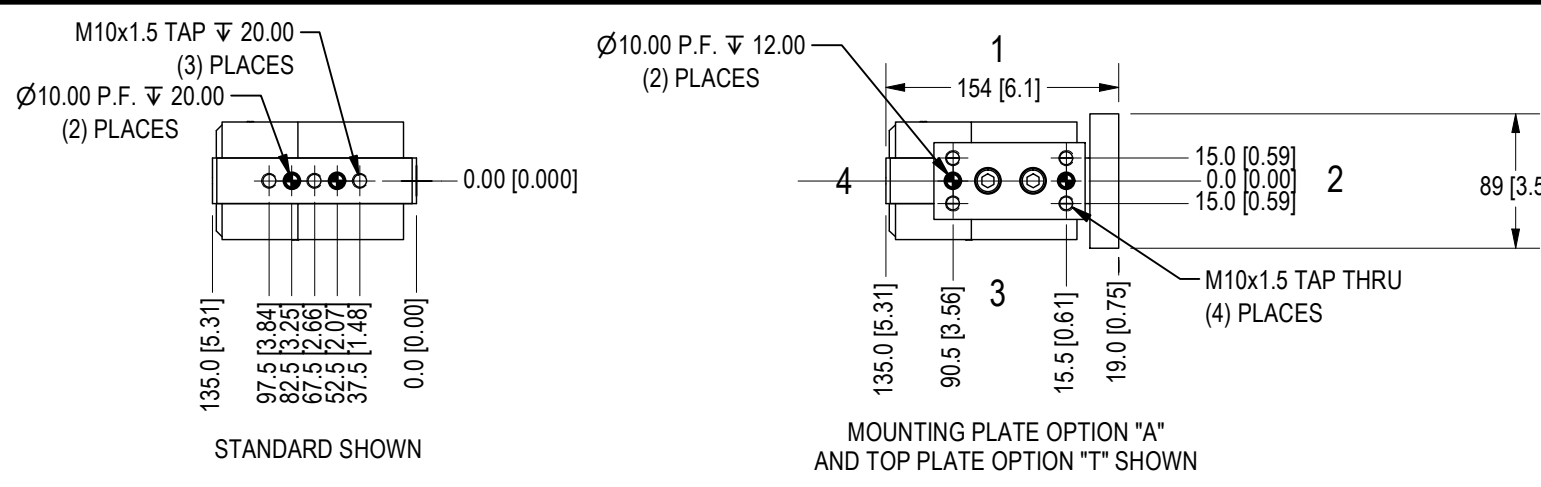


MOUNTING PLATE OPTION "A" AND TOP PLATE OPTION "T" SHOWN

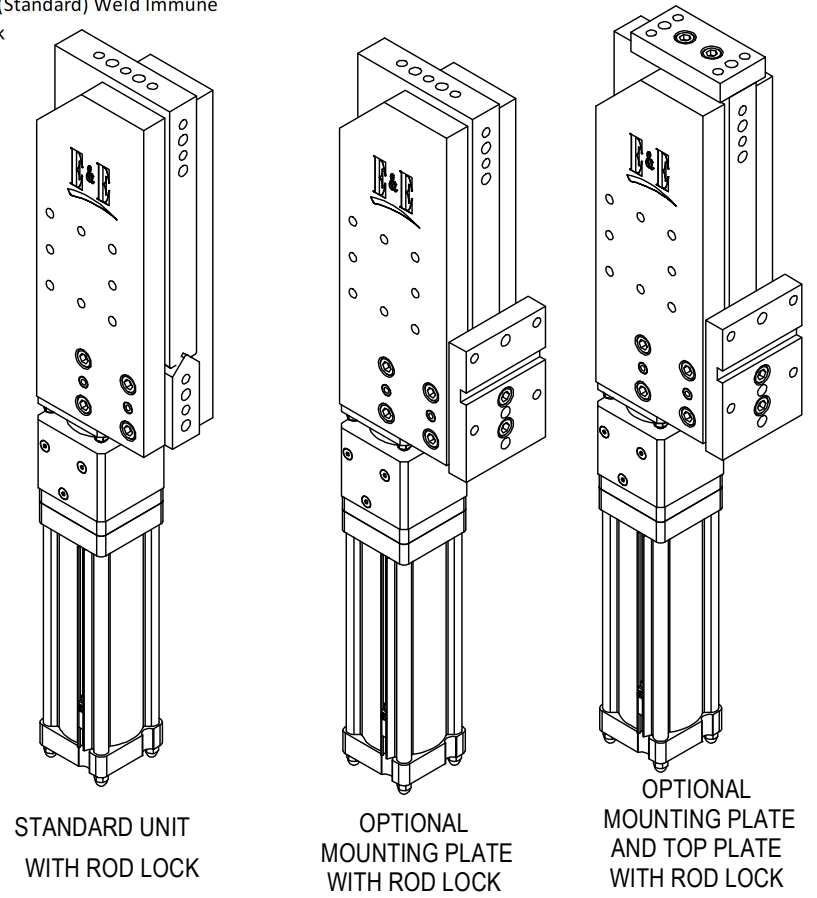


SEE SHT 2 FOR LOCKING CYLINDER

 7200 MILLER DR. WARREN, MI 48092 EE-CP.COM	NOTICE: THIS DRAWING IS PROPERTY OF E&E CUSTOM PRODUCTS INCLUDING THE PRINCIPLES OF THE DESIGN INVOLVED, AND IS SUBMITTED WITH AGREEMENT THAT IT IS NOT TO BE REPRODUCED, COPIED, OR LOANED, IN PART OR WHOLE, ACCEPTANCE OF THIS DRAWING WILL BE CONSTRUED AS AN AGREEMENT TO THE ABOVE		
	TITLE PNEUMATIC PART POSITIONER		
	PART NO.		
	DRAWN BY:	CHK'D BY: EC	APPR'D BY: TT
DATE: 6/14/2023	DATE: 1/23/2024	DATE: 1/23/2024	
SCALE: 1/4	DWG. NO. PPP75_TEMPLATE		
SHT 1 OF 3			

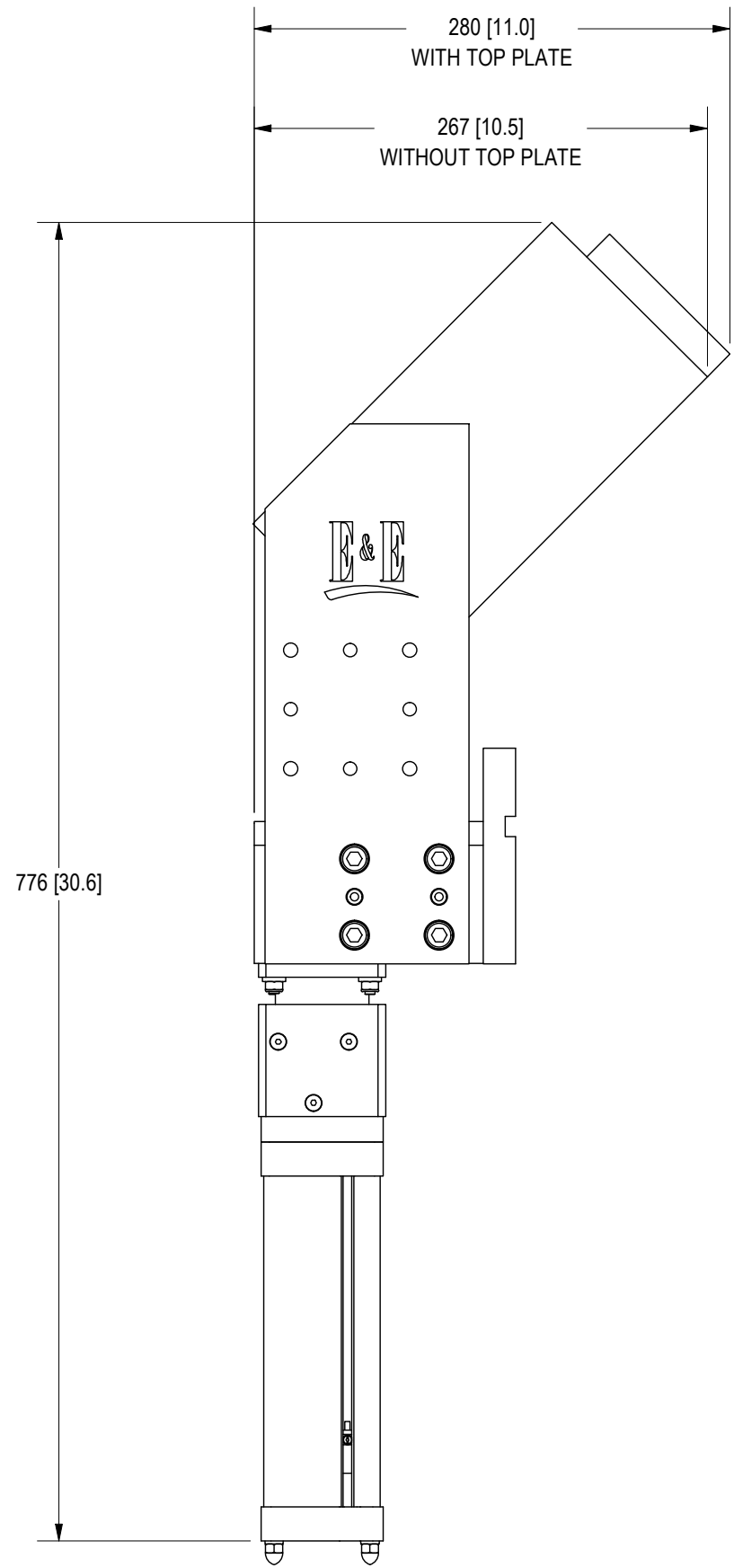


SYM		CHANGES	DATE	BY
ORDERING INFORMATION				
PPP75-		C		
TIP ANGLE	025, 030, 035, 040, 045	Top Plate	0 None (Standard) T Top Plate	
Ports	N Pneumatic - NPT Ports G Pneumatic - G Ports	Switch Position	E S01 Ext Pos R S01 Ret Pos	
Acuator	0 Standard L Locking	Switch Type	C Cylinder Switch	
Mounting	0 No plate (standard) A Mounting Plate as Shown B Mounting Plate opposite	Port Position	1 Port Position 2 Port Position 3 Port Position 4 Port Position (Shown)	
Switch	E Efecor Weld Immune B Balluff S Sick (Standard) Weld Immune T Turck			

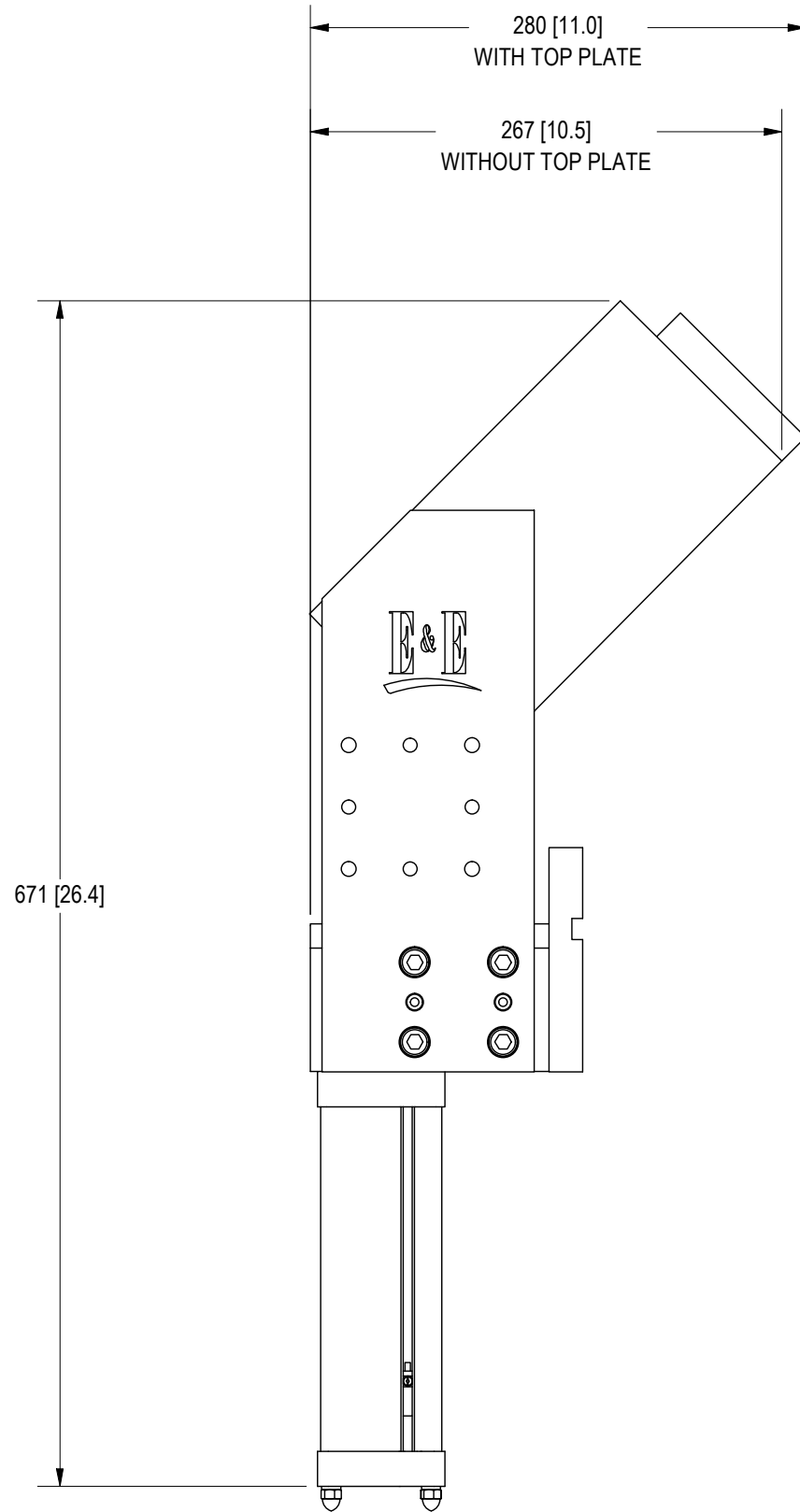


E & E CUSTOM PRODUCTS	NOTICE: THIS DRAWING IS PROPERTY OF E&E CUSTOM PRODUCTS INCLUDING THE PRINCIPLES OF THE DESIGN INVOLVED, AND IS SUBMITTED WITH AGREEMENT THAT IT IS NOT TO BE REPRODUCED, COPIED, OR LOANED, IN PART OR WHOLE, ACCEPTANCE OF THIS DRAWING WILL BE CONSTRUED AS AN AGREEMENT TO THE ABOVE			
	TITLE PNEUMATIC PART POSITIONER			
PART NO.				
7200 MILLER DR. WARREN, MI 48092 EE-CP.COM	DATE: 6/14/2023	CHK'D BY: EC	DATE: 1/23/2024	APPR'D BY: TT
	SCALE: 1/5	DWG. NO.	PPP75_TEMPLATE	
	SHT 2 OF 3			

SYM	CHANGES	DATE	BY
-----	---------	------	----



LOCKING CYLINDER SHOWN
(45° MAX OPEN SHOWN)



STANDARD CYLINDER SHOWN
(45° MAX OPEN SHOWN)

<p>7200 MILLER DR. WARREN, MI 48092 EE-CP.COM</p>	<small>NOTICE: THIS DRAWING IS PROPERTY OF E&E CUSTOM PRODUCTS INCLUDING THE PRINCIPLES OF THE DESIGN INVOLVED, AND IS SUBMITTED WITH AGREEMENT THAT IT IS NOT TO BE REPRODUCED, COPIED, OR LOANED, IN PART OR WHOLE, ACCEPTANCE OF THIS DRAWING WILL BE CONSTRUED AS AN AGREEMENT TO THE ABOVE</small>		
	TITLE PNEUMATIC PART POSITIONER		
	PART NO.		
	DRAWN BY:	CHK'D BY: EC	APPR'D BY: TT
DATE: 6/14/2023	DATE: 1/23/2024	DATE: 1/23/2024	
SCALE: 1/4	DWG. NO. PPP75_TEMPLATE		
SHT 3 OF 3			